

# SWAROVSKI

CREATE YOUR STYLE

*Flat Backs No Hotfix*





*Nail Design  
Lush Meadow*

# DESIGN PROJECT

## NAIL DESIGN "LUSH MEADOW"



Article	Product Group	Article No.	Amount	Size	Color	Color Code
	Flat Backs No Hotfix	2058	22 pcs.	SS 5	Crystal Rainbow Dark	001 RABDK
	Flat Backs No Hotfix	2058	8 pcs.	SS 7	Crystal Rainbow Dark	001 RABDK
	Flat Backs No Hotfix	2058	6 pcs.	SS 9	Crystal Rainbow Dark	001 RABDK
	Flat Backs No Hotfix	2088	6 pcs.	SS 12	Crystal Royal Green	001 L109S

**Supplies**  
Nail/Gel Polish, dark green, dark grey

Additional supplies depending on application technique

**Tools**  
Tweezers  
Wax stick/toothpick

Additional supplies depending on application technique

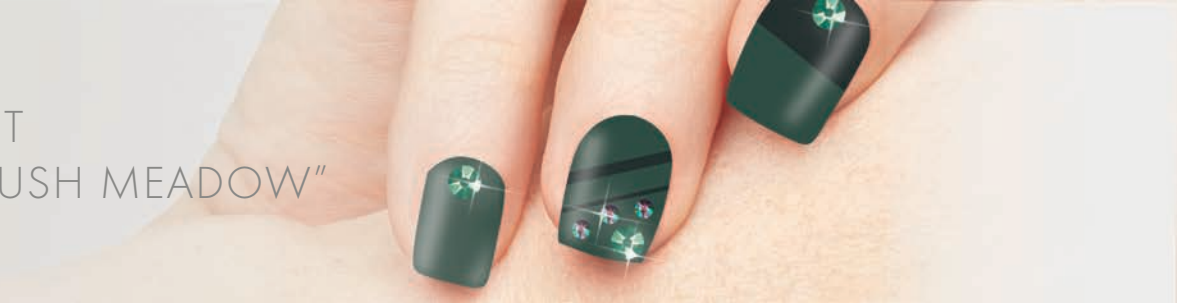
Level of design: **BEGINNER**

Also have a look at the **text instructions** on the last page!



# DESIGN PROJECT

## NAIL DESIGN "LUSH MEADOW"



### APPLICATION POSSIBILITIES

- STEP 1: Add a small amount of nail glue to a toothpick and place on the polished nail where you want to add the crystal.
- STEP 2: Pick up the Swarovski Flatback No Hotfix with a wax stick or tweezers and apply to the glue on the nail. Continue to apply glue and crystals to create the design of your choice.
- STEP 3: Use a thin detailing brush to apply a small amount of top coat around the base of the crystals to seal.

### SETTING WITH GEL POLISH

- STEP 1: After applying the gel color of your choice, apply the gel top coat.
- STEP 2: Pick up crystals with a wax stick or tweezers and apply to the uncured top coat in the pattern of your choice.
- STEP 3: Cure the nail under the UV light to set the top coat and Swarovski crystals.
- STEP 4: Dip a small detail brush into the top coat and seal the edges of the crystals. Cure under the UV light. Follow gel polish instructions to complete manicure.