



Fall/Winter 2021/22 Inspirational Projects

Created by Swarovski North America Ltd. In-House design



SWAROVSKI

SWAROVSKI

CREATE YOUR STYLE

Baroque Beauty

Swarovski crystals

Product Group	Article No.	Amount	Size	Color	Color Code
Crystal Pearls	5841	44 pcs	12mm	White	001 650

SUPPLIES:

- 1 - Artisan Toggle set - TierraCast® 94-6214-25
- 3 - large 30mm Gold Fashion Beads
- 30" - Beading wire
- 2 - 2mm crimp beads
- 2 - 3mm crimp covers

INSTRUCTIONS:

- Step 1: Using beading wire, slip on one crimp bead and one end of the Artisan Toggle and crimp to close. Add crimp cover.
- Step 2: Slide on 31 Round Baroque 12mm pearls, one large gold bead, one Round Baroque 12mm pearl, one large gold bead, one Round Baroque 12mm pearl, one large gold bead, and 11 Round Baroque 12mm pearls. Slip on one crimp bead and the other end of the Artisan Toggle and crimp to close. Add crimp cover.



SWAROVSKI

CREATE YOUR STYLE

Pearl Wrap Around

Swarovski crystals

Product Group	Article No.	Amount	Size	Color	Color Code
Pendants	6926	2 pcs	36mm	Crystal	001
Crystal Pearls	5844	20 pcs	10mm	White	001 650
Crystal Pearls	5844	10 pcs	14mm	White	001 650

SUPPLIES:

- 40" - large circle gold chain
- 30 - 1" Headpins
- 2 - 8mm jump rings

INSTRUCTIONS:

- Step 1: Using one head pin slide on one 5844 10mm Elongated Baroque pearl make a simple loop and set aside. Repeat 19 more times and set aside.
- Step 2: Using one head pin slide on one 5844 14mm Elongated Baroque pearl make a simple loop and set aside. Repeat 9 more times and set aside.
- Step 3: Using the gold chain, take one side of the chain and begin 3" up on the chain and begin to attach 10 pearls from step 1 and 5 pearls from step 2 randomly up the chain (one on each ring).
- Step 4: Continue to use the gold chain, take the other side of the chain and begin at the bottom 1/2" up on the chain and begin to attach 10 pearls from step 1 and 5 pearls from step 2 randomly up the chain (one on each ring).
- Step 5: Using a large jump ring attach one Growing Crystals Rhombus pendant at the bottom of one side of the chain. Repeat for the other side.



SWAROVSKI

CREATE YOUR STYLE

Trio of Opulent Earrings

Swarovski crystals

Product Group	Article No.	Amount	Size	Color	Color Code
Beads	5040	12 pcs	4mm	Crystal Shimmer 2X	001 SHIM2
Crystal Pearls	5841	2 pcs	12mm	White	001 650
Crystal Pearls	5842	2 pcs	10mm	White	001 650
Crystal Pearls	5844	2 pcs	14mm	White	001 650

SUPPLIES:

- 2 - Opulence post earrings - TierraCast® 94-1083-12
- 2 - Opulence Charm - TierraCast® 94-2544-12
- 2 - Opulence Teardrop Bead - TierraCast® 94-5834-12
- 2 - Dragon Bead - TierraCast® 94-5832-12

- 4 - Ear wires
- 4 - 2" Ballpins
- 2 - 2" eyepins



INSTRUCTIONS:

Earring #1

Step 1: Using one eye pin, attach one Opulence Charm on the bottom. Slide on one 4mm 5040 Crystal Shimmer 2X bead, one 5841 Round Baroque 12mm pearl, and one 4mm 5040 Crystal Shimmer 2X bead. Make a simple loop. Attach this to one Opulence post earring. Repeat for second earring.

Earring #2

Step 1: Using one ball pin, slide on one Opulent teardrop bead, one 4mm 5040 Crystal Shimmer 2X bead, one 5842 Coin Baroque 10mm pearl, and one 4mm 5040 Crystal Shimmer 2X bead. Make a simple loop. Attach this to one ear wire. Repeat for second earring.

Earring #3

Step 1: Using one ball pin, slide on one 14mm Elongated Baroque Pearl, one 4mm 5040 Crystal Shimmer 2X bead, one Dragon Bead, and one 4mm 5040 Crystal Shimmer 2X bead. Make a simple loop. Attach this to one ear wire. Repeat for second earring.

SWAROVSKI

CREATE YOUR STYLE

Tahitian Treat Necklace and/or Bracelet

Swarovski crystals

Product Group	Article No.	Amount	Size	Color	Color Code
Crystal Pearls	5842	36 pcs	10mm	Iridescent Tahitian Look	001 2004
Crystal Pearls	5844	24 pcs	14mm	Iridescent Tahitian Look	001 2004
Beads	5000	7 pcs	8mm	Black Diamond Shimmer	215 SHIM

SUPPLIES:

- 1 - Flora Toggle set - TierraCast® 94-6223-40
- 2 - 2mm crimp beads
- 2 - 3mm crimp covers
- 36" - Beading wire

INSTRUCTIONS:

- Step 1: Using one crimp bead slide onto one end of beading wire and slide on one end of the Flora toggle and crimp to close. Add crimp cover.
- Step 2: Slide on six 14mm 5844 Elongated Baroque pearls and one 8mm 5000 Black Diamond Shimmer bead. Repeat this pattern 3 more times.
- Step 3: Slide on nine 10mm 5842 Coin Baroque pearls and one 8mm 5000 Black Diamond Shimmer bead. Repeat this pattern 3 more times.
- Step 4: Slide on one crimp bead and other end of the Flora toggle and crimp to close. Add crimp cover.
- Note: This can either be worn as a necklace or wrapped 4 times around for a bracelet.*



SWAROVSKI

CREATE YOUR STYLE

Baroque Butterfly Earrings

Swarovski crystals

Product Group	Article No.	Amount	Size	Color	Color Code
Crystal Pearls	5841	2 pcs	8mm	Iridescent Tahitian Look	001 2004
Crystal Pearls	5843	2 pcs	16mm	Iridescent Tahitian Look	001 2004

SUPPLIES:

- 1 - Butterfly Link - TierraCast® 94-3224-12
- 2 - 1" ball pins
- 2 - 1" eye pins
- 2 - ear wires

INSTRUCTIONS:

- Step 1: Using one ball pin slide on one 16mm Baroque Drop pearl and make a simple loop. Attach to the bottom of the Butterfly link.
- Step 2: Using one eye pin slide on one 8mm Baroque Round pearl and make a simple loop. Attach to the top of the Butterfly link. Attach top of round pearl to ear wire. Repeat Steps 1-2 to make a second earring.
- Step 3: Repeat Steps 1-2 to make a second earring.



SWAROVSKI

CREATE YOUR STYLE

Emerald Eye Necklace

Swarovski crystals

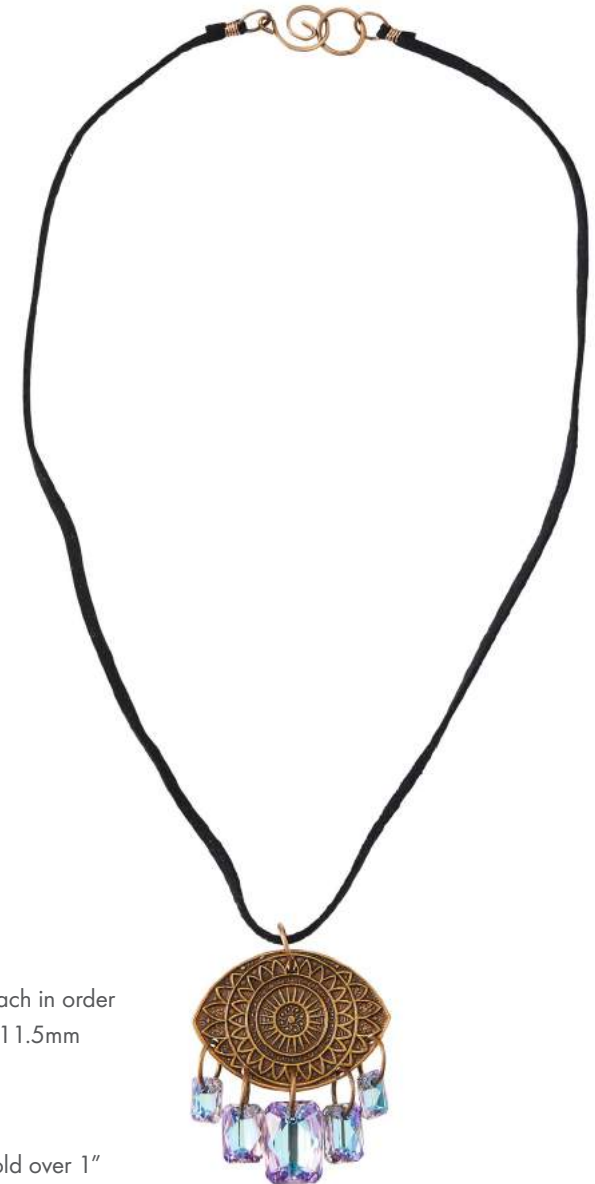
Product Group	Article No.	Amount	Size	Color	Color Code
Pendants	6435	2 pcs	9mm	Crystal Vitrail Light P	001 VL
Pendants	6435	2 pcs	11.5mm	Crystal Vitrail Light P	001 VL
Pendants	6435	1 pc	16mm	Crystal Vitrail Light P	001 VL

SUPPLIES:

- 1 - 39x28 Mandala Eye Blank - Vintaj® P023
- 1 - 21x9 Swirl Clasp - Vintaj® CL60
- 8 - 8mm jump rings
- 4" - 24 gauge Brass Artistic Wire®
- 2' - black suede lace
- 1 - hole punch

INSTRUCTIONS:

- Step 1: Using hole punch make 6 holes in the Mandala Eye blank—5 on the bottom and one on the top. Using the jump rings attach in order of the 5 holes left to right, one 9mm Emerald Pendant, one 11.5mm Emerald Pendant, one 16mm Emerald Pendant, one 11.5mm Emerald Pendant, and one 9mm Emerald Pendant. Attach another jump ring to the center hole on the top and close.
- Step 2: Cut the wire into two 2" pieces and set aside
- Step 3: Slide the suede lace through the open top jump ring from Step 1. Taking one jump ring and one end of the suede lace, fold over 1" of the lace onto the jump ring. Taking one 2" piece of wire, wire close by wrapping the wire around the suede lace. Repeat for the second side.
- Step 4: Attach the Swirl Clasp to the end of the necklace.



SWAROVSKI

CREATE YOUR STYLE

Emerald Domed Earrings

Swarovski crystals

Product Group	Article No.	Amount	Size	Color	Color Code
Pendants	6435	2 pcs	11.5mm	Crystal Vitrail Light P	001 VL

SUPPLIES:

- 1 - 20 mm Endless Passage drop - Vintaj® DP175
- 2 - ear wires
- 2 - 6mm jump rings
- 1 - hole punch

INSTRUCTIONS:

- Step 1: Using hole punch make 1 hole in the Endless Passage drop exactly opposite the original hole.
- Step 2: Using one jump ring attach one Emerald Pendant to one hole in the Endless Passage drop.
Attach ear wire to opposite hole.
- Step 3: Repeat Steps 1-2 to make second earring.



SWAROVSKI

CREATE YOUR STYLE

Triple the Fun Bracelet

Swarovski crystals

Product Group	Article No.	Amount	Size	Color	Color Code
Bead	5043	5 pcs	11mm	Amethyst Shimmer 2X	204 SHIM2
Bead	5500	12 pcs	9x6mm	Amethyst Shimmer 2X	204 SHIM2

SUPPLIES:

- 1 - Rope Magnetic Clasp - TierraCast® 94-6240-12
- 2 - Palace Crimp End - TierraCast® 94-3227-12
- 2 - 6mm jump rings
- 20" - Black suede lace
- 20" - 0.5mm black leather
- Alcohol wipes
- Swarovski CG500 two-part epoxy glue

INSTRUCTIONS:

- Step 1: Using alcohol wipes clean both Palace Crimp Ends on the inside.
- Step 2: Using the black suede lace, make a double overhand knot in the center. Pull down on the knot to make sure it is snug. Slip on (1) 5043 11mm Amethyst Shimmer 2x large hole bead and create another double overhand knot on the open side of the bead. Add one more bead on each side. Ending with a knot on each end to close off the beads. Set aside.
- Step 3: Cut the 0.5mm black leather into two equal pieces. Using one piece, slip on (6) 5500 9x6mm Amethyst Shimmer 2x beads. Center the beads and mark the leather on each end. While holding the beads in place, create a double overhand knot on each side of the set of 6 beads. Keep the leather snug as you pull down on the end. Repeat for second side.
- Step 4: Line up the three strands of leather with the large hole beads in the center and one each of the tear drop beads on the outsides. Cut the 0.5mm to desired length plus one inch on each end; repeat for second strand. Cut the suede lace to desired length plus 3/8" inch on each end. *NOTE: to calculate desired length, make sure to include the length of the clasp and two jump rings into your calculations or it will be too big.*



SWAROVSKI

CREATE YOUR STYLE

Triple the Fun Bracelet

Swarovski crystals

- Step 5: On each end of each piece of 0.5mm leather strand make an overhand knot at each end. Repeat for the second piece.
- Step 6: Line up the three strands of leather with the large hole beads in the center and one each of the tear drop beads on the outsides. Each of the three strands should be of similar length
- Step 7: Using the two-part epoxy glue, place one large dab in the center of the Palace Crimp End. Using a tooth pick spread the glue on the inside. Slip the end of the suede lace into the center of the crimp, followed by (1) 0.5mm leather knotted end to the left of the suede and the second piece to the right of the suede. Repeat for second side. Let sit until the glue sets.
- Step 8: Once the glue sets, squeeze the Palace Crimp End until the crimp holds the leather in place. Repeat for the second side.
- Step 9: Attach one 6mm jump ring to the loop of the Palace Crimp End and repeat for the second side.
- Step 10: Attach the two jump rings from step 9 to each end of the Rope Magnetic Clasp.



SWAROVSKI

CREATE YOUR STYLE

A Touch of Tabac

Swarovski crystals

Product Group	Article No.	Amount	Size	Color	Color Code
Flatback	2196/4	1 pc	30x22.7mm	Crystal Satin Tabac	001 SATT
BeCharmed Beads	5948	2 pcs	14mm	Crystal Golden Shadow	001 GSHA

SUPPLIES:

2 - 36x26mm Scrolled Border Oval Blank - Vintaj® PT139-270

36" - 1mm black leather

6" - 24 gauge Brass Artistic Wire®

Alcohol wipes

Swarovski CG500 Two Part Epoxy Glue

INSTRUCTIONS:

Step 1: Using alcohol wipes clean off the Scrolled Border Oval blank and set aside to dry.

Step 2: Using two-part epoxy, glue the one 2196/4 Oval Cabochon Flatback to the blank side of the Scrolled Border Oval blank and set aside for 24 hours to dry.

Step 3: Split the 1mm leather into two pieces. String one piece through the hole of the oval blank. Pull tails to match. Repeat for second side.

Step 4: Split the 24g wire into two even pieces. Approximately 3/8" from the hole of the blank, perform a wire wrap, keeping the wire snug, wrap 4-5 times. Repeat for the second side using the remaining piece of wire.

Step 5: Slip on (1) 14mm 5948 BeCharmed Bead in Crystal Golden Shadow through the pair of leather strands on one side of the cabochon, keeping the bead on the cabochon end. Make a double overhand knot and slide the bead down on top of the knot. Repeat for the other side.



SWAROVSKI

CREATE YOUR STYLE

Cool, Crisp, and Minty

Swarovski crystals

Product Group	Article No.	Amount	Size	Color	Color Code
Beads	5328	25 pcs	4mm	Pacific Opal Shimmer 2X	390 SHIM2
Flatbacks	2196/4	1 pc	30x22.7mm	Crystal Mint Green	001 L115S
Flatbacks	2088	18 pcs	SS16	Crystal Mint Green	001 L115S

SUPPLIES:

- 2 - 36x26mm Organic Arrow Oval Blank - Vintaj® PT120
- 3 - 9mm Ribbed Cable jump ring - Vintaj® JR106-040
- 1 - 32mm medium wire hoop - TierraCast® 01-0401-11
- 1 - medium lobster clasp
- 24" - 2mm silver leather
- 32" - 0.5mm gray leather
- 36" - 26 gauge silver Artistic Wire®
- 8" - 24 gauge silver Artistic Wire®
- Alcohol wipes
- Swarovski CG500 Two Part Epoxy Glue

INSTRUCTIONS:

- Step 1: Using alcohol wipes clean off the Organic Arrow Oval blanks and set aside to dry.
- Step 2: Using two-part epoxy, glue the one 2196/4 Oval Cabochon Flatback to one Organic Arrow Oval blank and set aside for 24 hours to dry.
- Step 3: Using two-part epoxy, glue all of the ss16 Mint Green flatbacks around the edge of the Organic Arrow Oval blank and set aside for 24 hours to dry.



SWAROVSKI

CREATE YOUR STYLE

Cool, Crisp, and Minty

Swarovski crystals

- Step 4: Cut the 0.5mm into two pieces one 18" and the remaining piece is 14".
- Step 5: Fold the 18" piece of leather and using the loop side, thread through the hole on the blank from front to back and pull snugly. Adjust the leather to even out the tails; if you are unable to do this, clip the tails so that they are even in length. Repeat step using the cabochon oval side and the 14" piece of leather.
- Step 6: Knot the tail ends of each component made in step 5 to the Medium Wire hoop making sure the knots are secure.
- Step 7: Using the 26g wire, wire wrap all 25 pieces of 5328 4mm Pacific Opal Shimmer 2x crystals to the Medium Wire hoop placing two wraps between each crystal. Keep the wire snug on the hoop so that the crystals don't move.
Note: for separation of the two leather drops, make sure to wire wrap one crystal between the two sets of leather knots continue around until completed.
- Step 8: Attach one jump ring to the top loop of the wire hoop. Close.
- Step 9: Thread the 2mm leather thru the jump ring from step #8. If necessary, cut leather to adjust for desired length.
- Step 10: Fold over one tail about $\frac{3}{4}$ ". Using 4" of 24g wire wire wrap 4-5 times to secure the leather. Wrap from the tail towards the loop. Repeat for the second side of the necklace.
- Step 11: Attach one 6mm jump ring to each loop made in step #10. Before closing one of the jump rings attach the lobster clasp then close.



SWAROVSKI

CREATE YOUR STYLE

Mystical Cornucopia Earrings

Swarovski crystals

Product Group	Article No.	Amount	Size	Color	Color Code
Fancy Stones	4160	2 pcs	18x13mm	Crystal Paradise Shine F	001 PARSH
Beads	5328	2 pcs	6mm	Crystal Paradise Shine	001 PARSH

SUPPLIES:

2 - 25mm Filigree Cones - Kabela Designs

2 - Add a Bead Ear Wires - TierraCast® 90-1150-00

Alcohol wipes

Swarovski CG500 Two Part Epoxy Glue

INSTRUCTIONS:

Step 1: Using alcohol wipes clean off the Filigree Cones and set aside to dry.

Step 2: Using two-part epoxy, glue one 4160 Oval Mystic Fancy into the bottom end of the Filigree Cone and set aside for 24 hours to dry. Repeat one more time.

Step 3: Using one Add a Bead Ear Wire slide on one 6mm 5328 Paradise Shine bead and make a simple loop. Attach to the top of the Filigree cone. Repeat to make the second earring.



SWAROVSKI

CREATE YOUR STYLE

Pretty in Pink

Swarovski crystals

Product Group	Article No.	Amount	Size	Color	Color Code
Beads	5328	150 pcs	3mm	Light Rose Shimmer 2X	223 SHIM2
Beads	5328	100 pcs	4mm	Light Rose Shimmer 2X	223 SHIM2
Beads	5040	50 pcs	6mm	Light Rose Shimmer 2X	223 SHIM2
Beads	5000	2 pcs	8mm	Light Rose Shimmer	223 SHIM
Chatons	1088	2 pcs	SS39	Light Rose Shimmer F	223 SHIM

SUPPLIES:

- 2 - Plain Chaton Bezel Setting - TierraCast® 94-2545-61
- 4 - 1" Ball pins
- 2 - oval jump rings
- 5 ½ - Memory wire rings

INSTRUCTIONS:

- Step 1: Using alcohol wipes clean off the chaton bezel settings and set aside to dry.
- Step 2: Using two-part epoxy, glue in one Light Rose Shimmer Chaton into the Chaton Bezel setting and set aside for 24 hours to dry.
Repeat one more time.
- Step 3: Using a round nose plier bend back to make a loop the end of the memory wire.
- Step 4: Slide on 75 3mm 5328 Light Rose Shimmer 2X beads, 50 4mm 5328 Light Rose Shimmer 2X beads, 48 6mm 5040 Light Rose Shimmer 2X beads, 50 4mm 5328 Light Rose Shimmer 2X beads, and 75 3mm 5328 Light Rose Shimmer 2X beads. Using round nose plier bend back to make a loop.



SWAROVSKI

CREATE YOUR STYLE

Pretty in Pink

Swarovski crystals

- Step 5: Using one ball pin slide on one 8mm 5000 Light Rose Shimmer bead and make a simple loop.
Repeat once and set aside.
- Step 6: Using one ball pin slide on one 6mm 5040 Light Rose Shimmer 2X bead and make a simple loop.
Repeat once and set aside.
- Step 7: Using one component made in Steps 1, 5, & 6 attach these to one loop end on the memory wire bracelet. Repeat this for the other side of the bracelet.



SWAROVSKI

CREATE YOUR STYLE

Frosty Pink Surprise

Swarovski crystals

Product Group	Article No.	Amount	Size	Color	Color Code
Beads	5328	4 pcs	6mm	Light Rose Shimmer	223 SHIM
Beads	5328	4 pcs	4mm	Light Rose Shimmer 2X	223 SHIM2
Beads	5000	2 pcs	8mm	Light Rose Shimmer	223 SHIM
Beads	5043	2 pcs	11mm	Crystal Shimmer 2X	001 SHIM2

SUPPLIES:

- 4 - 24x6mm paddle - Vintaj® PT196-330
- 2 - 2" Eye pins
- 2 - 1" Ball pins
- 2 - Ear Wires

INSTRUCTIONS:

- Step 1: Using one eye pin, slide on one 4mm 5328 Light Rose Shimmer 2X bead, one 6mm 5328 Light Rose Shimmer bead, one 11mm 5043 Crystal Shimmer 2X XXL bead, one 6mm 5328 Light Rose Shimmer bead, and one 4mm 5328 Light Rose Shimmer 2X bead and make a simple loop. Repeat once and set aside.
- Step 2: Using one ball pin slide on one 8mm 5000 Light Rose Shimmer and make a simple loop. Repeat once and set aside.
- Step 3: Attach one bead component made in step one with beaded component made in Step 1. Attach the ear wire to top loop.
- Step 4: Repeat Step 3 to make second earring.



SWAROVSKI

CREATE YOUR STYLE

Shimmering Bangle

Swarovski crystals

Product Group	Article No.	Amount	Size	Color	Color Code
Chatons	1088	15 pcs	SS39	Light Rose Shimmer F	223 SHIM

SUPPLIES:

- 1 - Fifteen Setting Cuff Bracelet - Las Vegas Rhinestones EB113
- 1 - Interchangeable Prong Pushing Hand Tool - Las Vegas Rhinestones

INSTRUCTIONS:

- Step 1: Using the hand tool place one SS39 Chaton stone into the cup and press down prongs.
Repeat 14 more times to finish the bracelet.



SWAROVSKI

CREATE YOUR STYLE

Sliver Harvest Moon Earrings

Swarovski crystals

Product Group	Article No.	Amount	Size	Color	Color Code
Pendants	6430	6 pcs	8mm	Light Colorado Topaz Shimmer	246 SHIM
Pendants	6430	2 pcs	10mm	Light Colorado Topaz Shimmer	246 SHIM

SUPPLIES:

- 2 - 32mm Wandering Pathway drop - Vintaj® DP 057
- 8 - 6mm Ribbed cable jump ring - Vintaj® JR112
- 2 - Ear Wires
- Hole Punch

INSTRUCTIONS:

- Step 1: Using hole punch make three holes on the bottom rung of the Wandering Pathway drop. Repeat once and set aside
- Step 2: Using the jump rings attach in order of the 3 holes on the bottom left to right, one 8mm Classic Pendant, one 10mm Classic Pendant, and one 8mm Classic Pendant. Attach another jump ring with one 8mm Classic Pendant to the center hole on the top. Attach Ear wire. Repeat to make second earring.



SWAROVSKI

CREATE YOUR STYLE

Lotus Blossom Princess Droplets

Swarovski crystals

Product Group	Article No.	Amount	Size	Color	Color Code
Pendants	6431	4 pcs	9mm	Emerald Shimmer	205 SHIM
Pendants	6431	2 pcs	11.5mm	Emerald Shimmer	205 SHIM

SUPPLIES:

- 2 - 27x23mm Lotus Blossom Connector - Vintaj® C4H0001
- 6 - 4mm jump ring
- 2 - Ear Wires

INSTRUCTIONS:

Step 1: Using the jump rings attach in order of the 3 holes on the bottom left to right, one 9mm Princess Pendant, one 11.5mm Princess Pendant, and one 9mm Princess Pendant. Attach Ear wire to top hole. Repeat to make second earring.

