

Michael's

Made by you™

*Right Angle Weave
Rope Bracelets*



John Bead
ESTABLISHED 1954

Materials

John Bead Czech Glass Seed Beads in Size 6/o
Hawaii Mix SKU 10627173

John Bead Czech Glass Seed Beads in Size 10/o
Hematite SKU 10416602

Hammered Rhodium Toggle Clasp
SKU 10473984

Charmalong™ Rhodium Heart Charms
SKU 10630852

6mm Silver Jump Rings SKU 10376096

Wildfire Beading Thread .008
SKU 10472084

Size #10 Hard Beading Needle SKU 10332394

Chain Nose Pliers SKU 10121794

Bent Nose Pliers SKU 10121795

Precision Scissors SKU 10591717

Beading Mat SKU 10348546

Skill Level - Intermediate / Advanced

Time to Complete - 1 Hour

In this class we will create a drapery rope that looks great with patterns, color block, ombre, and solid designs. The finished rope is both flexible and holds its shape.

The stitch, known as cubic right angle weave, is often cited as an advanced technique. I've found that it was much easier to learn than I expected. With only a few steps that repeat throughout the bracelet, it is also one of the most forgiving rope stitches for getting the right tension while stitching.

This stitch can be worked with any beads. The sample shown was created with a Size 6/0 Czech Glass Seed Bead mix. The 10/0 beads are used to attach clasp.

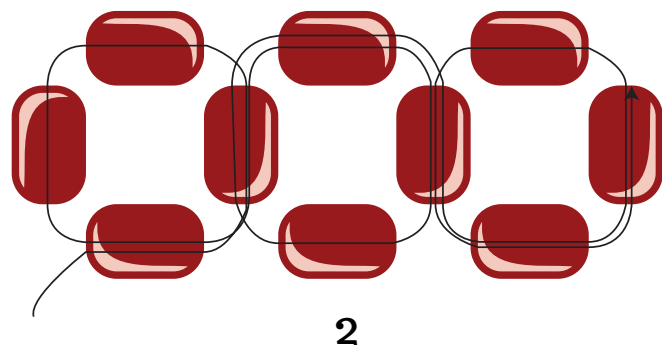
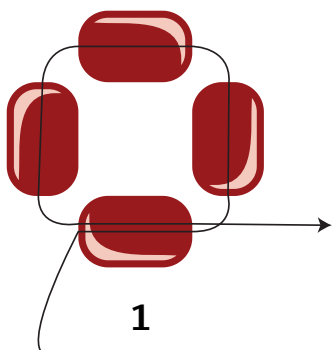
In the directions, the A beads are size 6/0 and the B beads are 10/0.

Step 1

Beginning with a 50" [127cm] length of beading thread, thread a size #10 beading needle and fold over at about 7" [18cm]. Leaving a 10" [25cm] tail, string four A beads. Go back through the first A bead. A cube will form. At this step you can optionally go through all the beads again to reinforce.

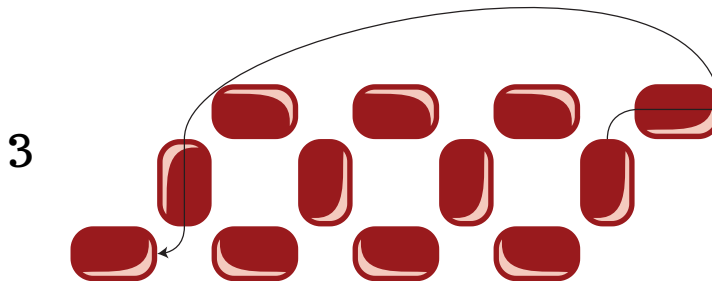
Step 2

Go through the next A bead and then pick up 3A. Go back through the A bead you exited from. Go through the next 2A. Pick up 3A and go through the bead you last exited and continue through the next 2A.



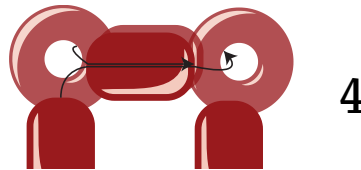
Step 3

Pick up 1A. Go through the first perpendicular A on the starting side. Pick up another A and this time go back through the bead exited at the beginning of this step. The goal here is to connect the sides to form a four-sided cube.



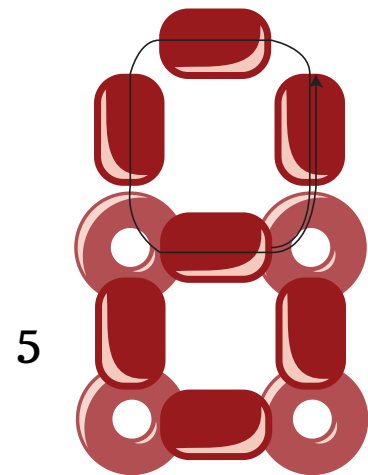
Step 4

A cube will form. Pass through the four A beads that form the top of this cube.



Step 5

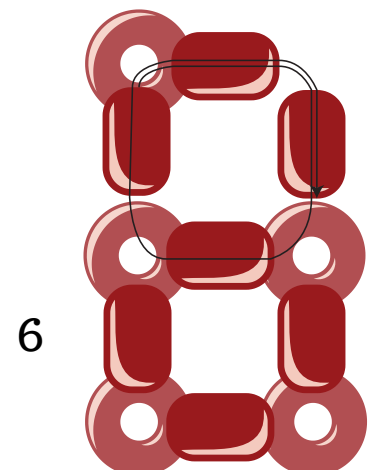
Pick up 3A. Go back through the A exited at the beginning of this step. Continue through the next A.



Step 6

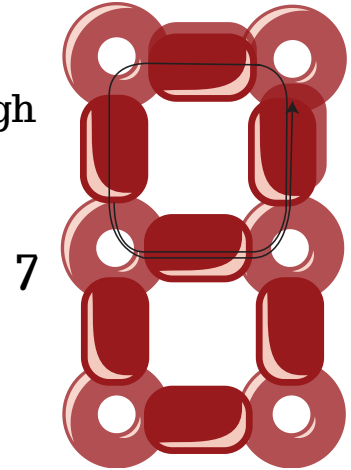
Rotate the cube to show the next of the four sides. Pick up 2A. Go through the A that is the top bead of the cube below. Continue through the next side A and then go back through both of the 2A added in this step.

You thread will be exiting a side bead pointing down.



Step 7

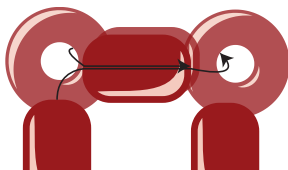
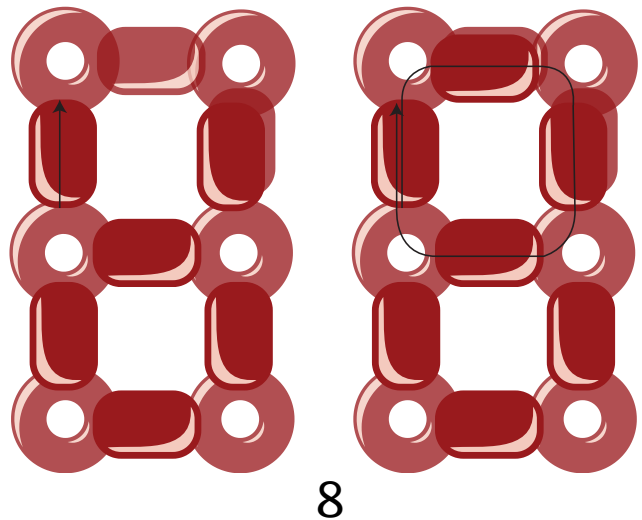
Rotate to show the next side of the cube. Go through the next A bead. Pick up 2A. Go through the next 3A.



Step 8

Rotate to show the last, open side. Note the position of the exiting thread, headed up from the side bead of the last cube created.

Pick up 1A, then pass through the next 3A.



Step 9

Go through the next A, then pass through all four of the A beads that make up the top of the cube (this includes an additional pass through the bead you started from).

Step 10 - Finishing

An easy way to add a clasp is to use 10/0 seed beads to create a loop to attach a jump ring.

Exiting from one of the top beads in the last cube, Pick up 2B. Go through the jump ring or clasp, then pick up 2B. Go through the A bead across from the one you're exiting. The diagram marks these beads as 1 and 2. Go through all 4B and then go through the first A, heading through in the opposite direction the thread is exiting from.

Repeat this step again to reinforce.



Step 11 - Weaving in Thread

To weave in the thread, go through the beads following the thread path through cubes, moving from and going around through a few sets of four before trimming the remaining thread.

New thread can be added the same way.

Step 12

Thread a needle onto the tail thread at the start of the project. Using the tail thread, repeat step 9 around the four beads that make up the bottom cube side of the rope.

Then, with your thread exiting from any of those beads, repeat Step 10 to add the clasp and Step 11 to weave in.

Step 12 - Optional Embellishment Idea

If you'd like, you can add an embellishment of 10/0 or 11/0 beads to the gaps around each segment of the rope. To do this, refer to the thread path shown in Step 9 and following this path, pick up 1B before going through each of the four A beads.

Weave down through the next side (vertical) A bead and then go through the next top (perpendicular) A bead. Add a B bead in between each A bead around. Repeat for the length of the bracelet.



Shown here in
Czech 6/0 mix
Topaz with 10/0
Opaque Black.

Share your design with
[#MakeItWithMichaels](#)
and [#JohnBead](#)