

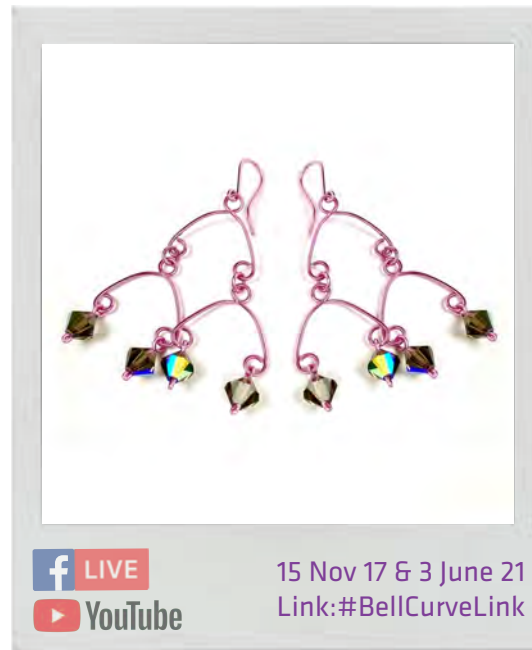


BRENDA SCHWEDER  
JEWELRY

## BellCurve Refresh-Mid Century Modern Earrings (#22-21)

#bellcurvejohnbead #bellcurventaj

[Is BellCurvier a word? If not, it should be! Inspired by a mobile I saw in a Palm Springs shop [what could be posher really!?], I've taken an all-time fave wire element, the original BellCurve, and rain-bowed it a bit more! This way, it not only harkens a Mid Century Modern vibe, but celebrates every band of color and every individual within.]



### Materials

- Aluminum Wire, 18 gauge
  - Rose [SKU 74720002-14]
  - Rainbow colors
- Preciosa 5 inch Strand Rondell 8mm [SKU 632 41400-12]
- Black Diamond AB

### Tools

- John Bead Pro Line Pliers/Cutter Set [SKU 74527341]
  - Round nose [SKU 74527301]
  - Chain nose [SKU 74527300]
  - Side-cutter [SKU 74527320]
- Nylon Jaw Pliers [SKU 74527322]
- Metal Complex Hammer, nylon [SKU 74529456]
- Metal Complex Bench-block, 4" [SKU 74529401]
- BellCurve pattern [Hand Tool version @ Bead Projects & PDF's from John Bead Facebook group] or [Jig version @ [www.BrendaSchweder.Etsy.com](http://www.BrendaSchweder.Etsy.com)]



BRENDA SCHWEDER  
JEWELRY

# BellCurve Refresh-Mid Century Modern Earrings (#22-21)

*John Bead*  
ESTABLISHED 1954

#bellcurvejohnbead #bellcurventaj

## Directions

### Create the BellCurve Links

1. Cut a 4" length of 18-gauge aluminum wire with a cutter.
2. Referencing the 1/2" Setup, form a BellCurve link to match with round nose pliers. [Note: For larger or slightly smaller links, use the 3/8" or 5/8" Setups.]
3. Cut each loop-end close to the intersecting wire as per the pattern and deburr the ends with a cup burr or needle file. [Note: You may need to open the loops to access the ends.]
4. Hammer to flatten and harden. [Note: Hammer gently where the wire overlaps.]
5. Repeat Steps 1-4 for as many links/rows as preferred: for two rows, make three; for three rows, make six, etc.

### Create the Jump Rings

1. Cut a 4" length of 18-gauge aluminum wire.
2. Referencing the JumpRing Setup, form a coil long enough to yield four JumpRings to match. [Note: Cut more for additional rows.]
3. Cut each jump ring from the coil using the flush [back] of the cutter to create a clean end-to-end butted opening.
4. Hammer to flatten and harden.

### Create the Ear Wires

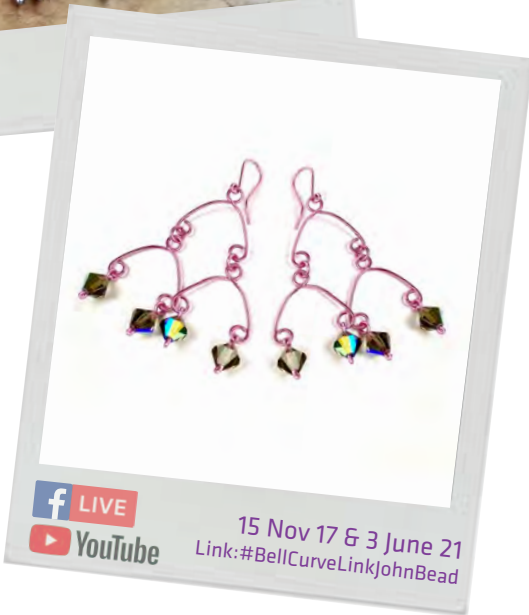
(Reference Ear Wire pattern)

### Assemble the Earrings

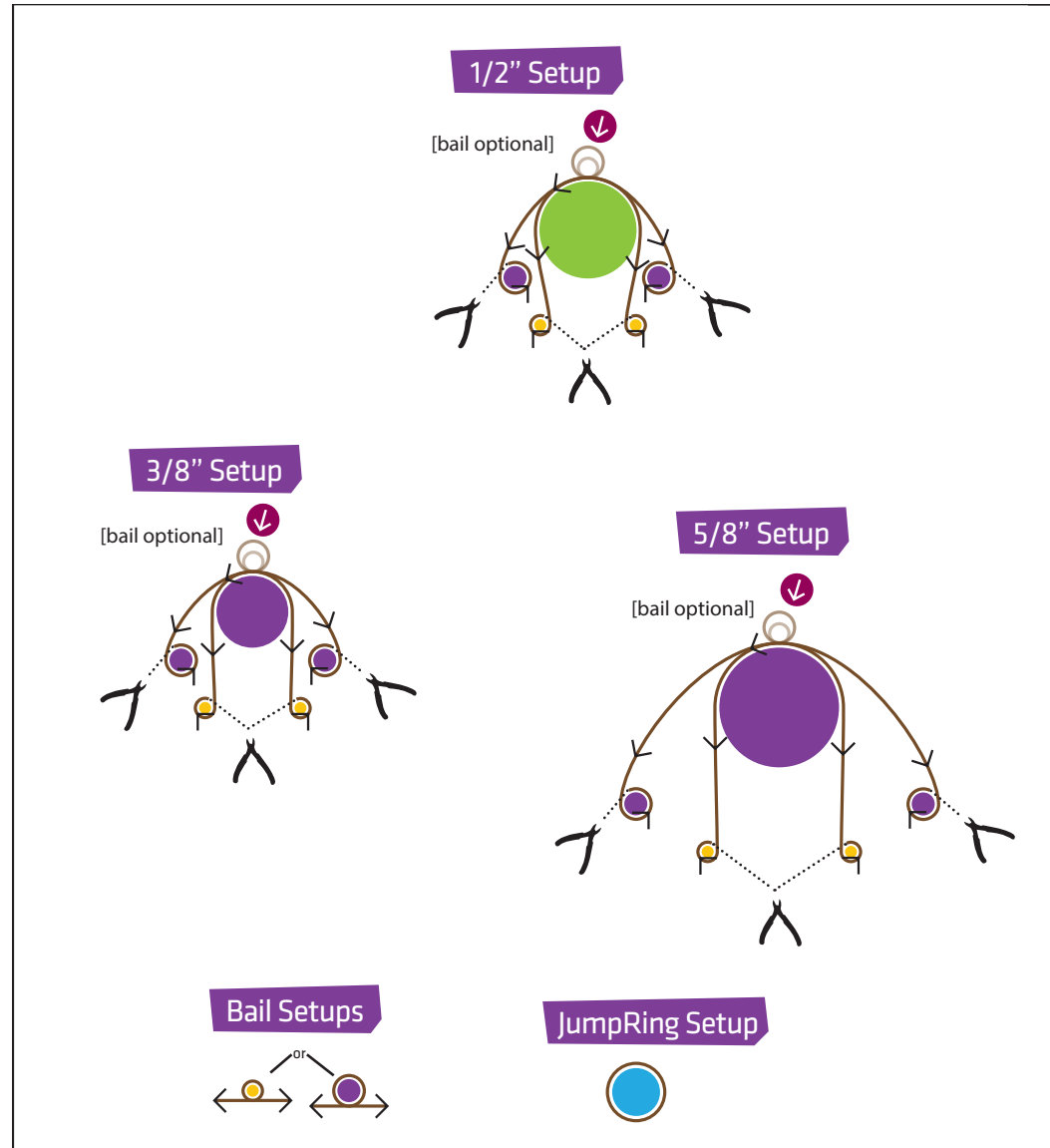
1. Open and close a jump ring around one bottom loop of a BellCurve Link and the top loop of another.
2. Repeat to the remaining bottom loop of the first BellCurve Link. [Note: For additional rows, continue adding links to each of the bottom loops, as directed above.]
3. Open and close the loop of an ear wire around the top loop of the same link.
4. Repeat Steps 1-3 for the second earring.

Brenda Schweder  
for John Bead Corporation

BellCurve Link



• BellCurve Link Setup  
 FocalWire (4") length,  
 center wire 16-20g steel  
 12-18g other



Measurement Legend

●	1/32"
●	1/16"
●	1/8"
●	3/8"
●	5/8"
●	7/8"
●	3/16"
●	1/4"
●	1/2"
●	3/4"
●	1"

- Start Here
- Wrap/Bind
- Mirror Image
- LollipopOnTop
- Lead Length / Direction
- End / Cut Here
- BuildOut / BuildIn

Print at 100%



©2021 Now That's a Jig! by Brenda Schweder

John Bead  
ESTABLISHED 1954