

*John Bead*  
ESTABLISHED 1954



# THE GINKGO PENDANT

Featuring the Ginkgo Bead

Create Your Own

Written and designed by  
Debra Schwartz for John Bead Corp.

[blog.johnbead.com](http://blog.johnbead.com)

# John Bead Product List for the Ginkgo Zinnia Pendant

## Pendant A

**27888200-16**

**Czech Ginkgo Leaf Bead** 7.5mm Matte - Metallic  
Bronze Iris

**27801732-26**

**Czech Bead ZoliDuo Left**  
2Hole 5x8mm  
Alabaster/Pastel Eggplant

**27801764-05**

**Czech Glass Bead Link** 3x10mm Green  
Opaque/ Dark travertine Fullcoat

**277054-088**

**Swarovski Bead** 5328 Bicone  
3mm Rose AB 288pcs

**695SB110-4210**

**Miyuki Seed Bead** 11/0 Duracoat Galvanized Hot  
Pink

## Pendant B

**27888200-19**

**Czech Ginkgo Leaf Bead** 7.5mm Matte - Metallic  
Flax

**27801732-25**

**Czech Bead ZoliDuo Left**  
2Hole 5x8mm  
Alabaster/Pastel Steel Grey

**27801761-04**

**Czech Glass Bead Link** 3x10mm Black/  
Hematite Fullcoat

**277054-081**

**Swarovski Bead** 5328 Bicone  
3mm Crystal AB 288pcs

**65001506**

**Czech glass 10/0 seed beads** –  
Gunmetal Metallic 500grams

**74422020-11**

Description Miyuki Nylon Beading  
Thread B *Black* (50m)

**74509850**

Bead mat

**74509607**

Scissors/Snips

**74509836**

Thread burner (optional)  
Wildfire Battery Operated Heat Cord  
Cutter

**74301016**

Gold eye beading needles size 11

# Step by Step Instructions for the *Ginkgo Zinnia Pendant*

Design & Pattern by *Debra Schwartz* for John Bead Corp.

**Techniques:** Basic bead weaving knowledge, Netting stitch, Picot stitch

**Finished Size:** approx. 2 inches across

## You will need:

G (20) Ginkgo Beads - Matte - Metallic Bronze Iris

L (10) Link Beads - Green Opaque/ Dark travertine Fullcoat

Z (20) ZoliDuo Beads - Alabaster/Pastel Eggplant

B (05) 3mm Swarovski Bicone Beads - Rose AB

S11 (2-3grams) 11/0 Miyuki Seed Beads  
– Galvanized Duracoat Hot Pink

Beading Thread – Miyuki B - Blush

Beading needles – Gold Eye size 11 & 12

Bead mat, Scissors or thread burner

## Tips:

- Check the 2 hole beads to make sure the holes are open.
- Thread tension: be careful not to pull the beading thread too tight.
- Cull the beads for uniformity and consistency.
- Switch to a smaller beading needle when necessary, to avoid breaking beads.

## Sample Colorways for the *Ginkgo Zinnia Pendant*:

Pendant A:



G – Matte - Metallic Bronze Iris

L – Green Opaque/ Dark travertine Fullcoat

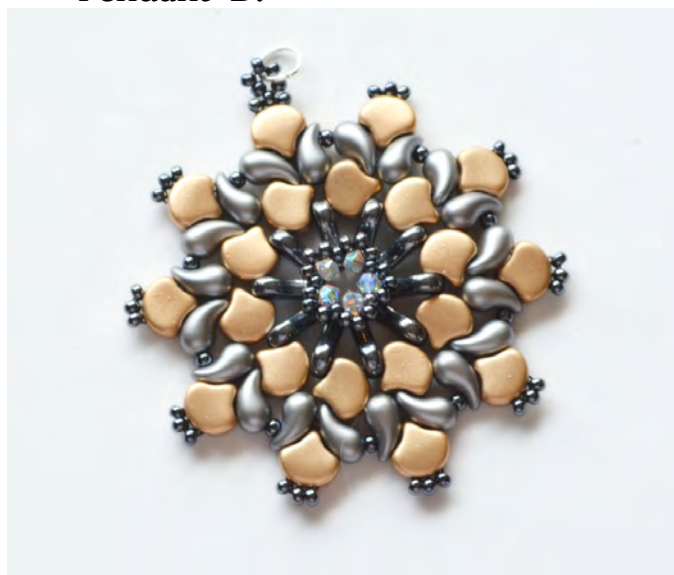
Z – Alabaster/Pastel Eggplant

B – Rose AB

S11 – Galvanized Duracoat Hot Pink

[www.johnbead.com](http://www.johnbead.com)

Pendant B:



G – Matte - Metallic Flax

L – Black/ Hematite Fullcoat

Z – Alabaster/Pastel Steel

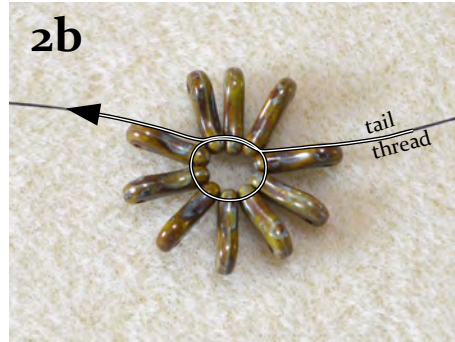
B – Crystal AB

S11 – Gunmetal Metallic

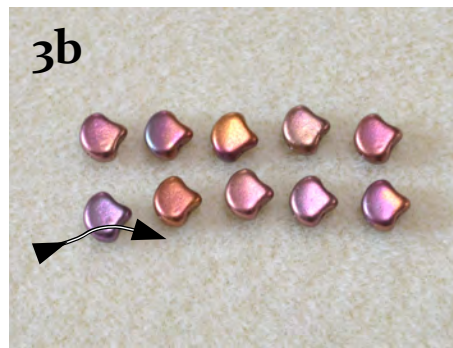
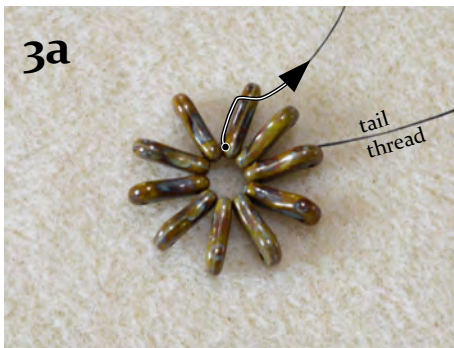
# Ginkgo Zinnia Pendant

by Debra Schwartz for John Bead Corp.

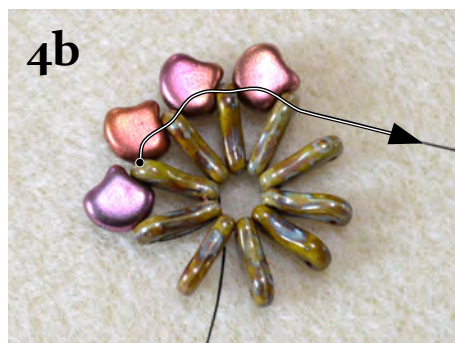
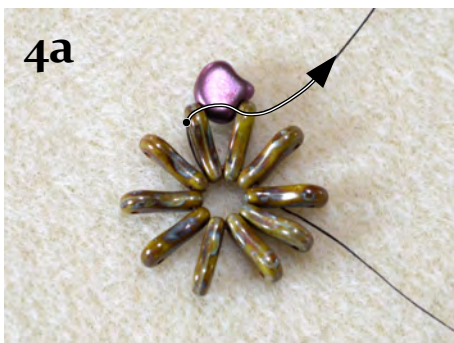
- 1. Begin by** threading a size 11 beading needle with approx. 4 to 5 feet of prepared beading thread. Leave a 10 to 12 inch tail thread.
- 2.** Arrange the 10 L beads on your bead mat with the narrow end pointing up and the curves pointing in the same direction. Pick up the 10 L beads through the hole on the narrow end. Sew through all the beads again to make a circle + 3 L to overlap the thread. [photo 2a, 2b]



- 3.** Sew through the top, unused hole in the L bead just exited. Arrange 10 G beads on your bead mat with the point facing to the right. When adding the G beads between the L beads be sure the curve of the large end of the L point down. [photo 3a, 3b]



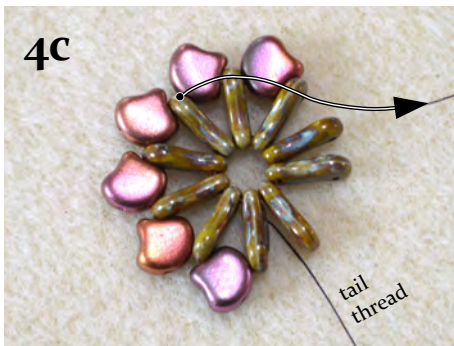
- 4.** Pick up each G by sewing through the bottom hole from left to right + sew through the next L in the circle. Continue adding G beads around the circle. Sew through these beads again. Thread exits an L bead. [photo 4a, 4b, 4c, 4d]



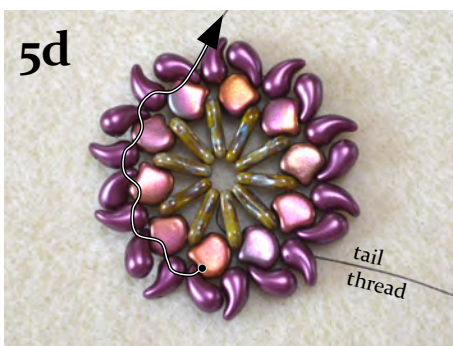
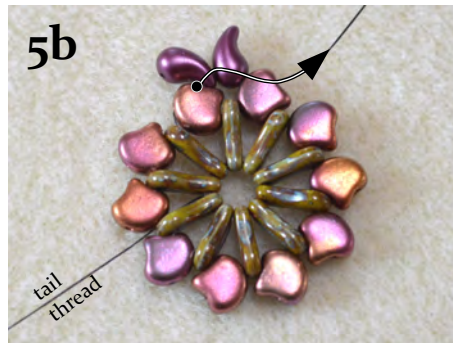
# Ginkgo Zinnia Pendant

by Debra Schwartz for John Bead Corp.

## 4. continued - [photo 4c, 4d]



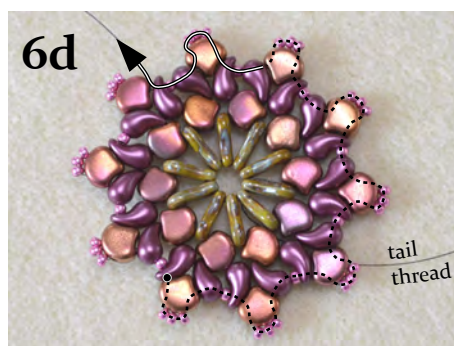
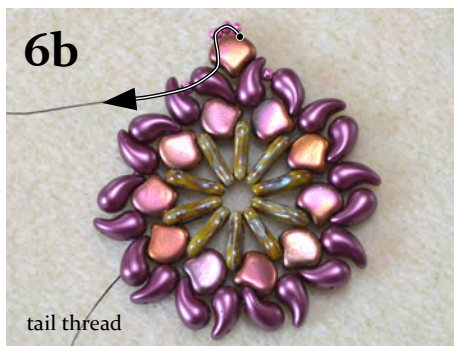
5. Sew through the top hole in the G bead next to the L just exited. Pick up 2 Z; 1 Z through the hole in the **point** from left to right + 1 Z through the hole in the **fat end** from left to right and sew through the next G in the round. Continue adding Z beads around the circle. Sew through these beads again. Thread exits an L bead. [photo 5a, 5b, 5c, 5d]



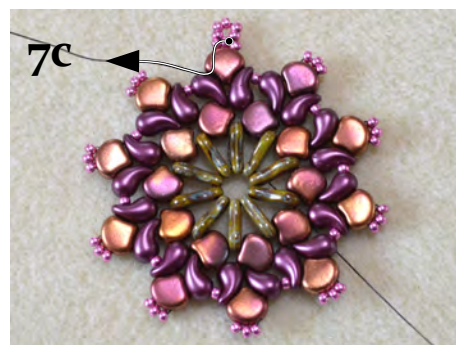
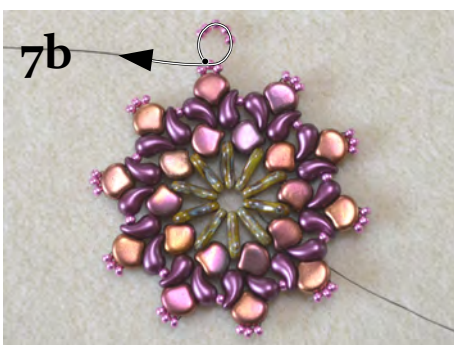
# Ginkgo Zinnia Pendant

by Debra Schwartz for John Bead Corp.

**6.** Sew through the top hole of Z just exited. Pick up 1 S11. Sew through the next Z in the circle. Arrange 10 G on your bead mat so the point is facing down. Pick up each G through the hole on the right by sewing up. Pick up 3 S11. Sew down through the left hole of the same G. Sew through the next Z in the circle. Continue adding G and S11 beads this way all around the circle. Sew through several beads to overlap the thread. Thread exits the left hole of a G bead. [photo 6a, 6b, 6c, 6d]



**7.** Sew through 2 of the S11 beads atop the G bead. Pick up 5 S11. Sew through the S11 just exited. Sew through these 6 beads again to reinforce the thread. Sew through the next S11 + right hole of G + 1 Z + 1 S11 + 1 Z and continue sewing through the bead work. Trim any excess. [photo 7a, 7b, 7c]



# Ginkgo Zinnia Pendant

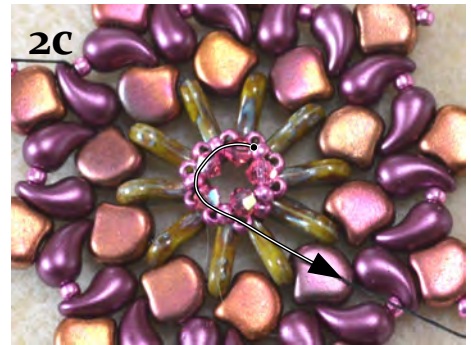
by Debra Schwartz for John Bead Corp.

## Center of the Pendant:

**1. Working from the center of the pendant** – Use the 10 to 12 inch tail thread that exits from a hole in the small end of an L bead; Pick up 3 S11. Sew through the L just exited. The 3 S11 added are a picot stitch. Sew through 2 L. Continue adding picots to every other L bead for a total of 5 picots. Thread exits the first L you added a picot to. [photo 1a, 1b, 1c]



**2. Sew through 2 S11 of the picot on the L just exited. Pick up 1 B. Sew through the center S11 of the next picot in the circle. Continue to add 1 B between the S11 beads for a total of 5 B beads. Sew through the 1<sup>st</sup> B added + 1 S11 to overlap thread. [photo 2a, 2b, 2c]**

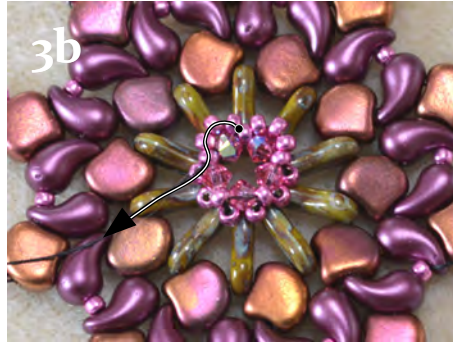
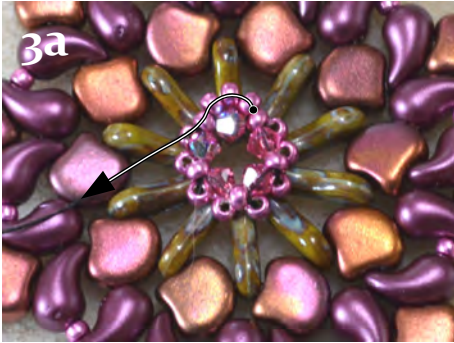


## Ginkgo Zinnia Pendant

by Debra Schwartz for John Bead Corp.

6

3. Pick up 3 S11. Sew through the next S11 in the circle. Repeat to add 3 S11 around each B bead. Sew through all these beads again to reinforce. [photo 3a, 3b]



4. Weave the remaining thread into the bead work. Trim any excess.

5. Attach a 5mm or 6mm jump ring to the loop. String your new pendant on a chain, strand of leather or pretty ribbon.

Enjoy your new Ginkgo Zinnia Pendant

