

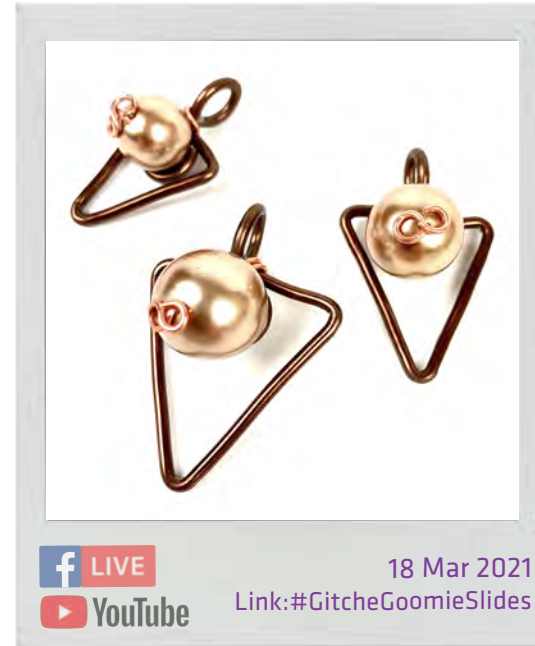


B R E N D A S C H W E D E R
J E W E L R Y

GitcheGoomie Slides (#11-2021)

#githegoomieslidesjohnbead #githegoomieslidesntaj

[Whatdoyamean, GitcheGoomie?! LOL! This design is a refresh of a Nealay Patel original design for Now That's a Jig! titled GitcheGoomie Necklace where Nealay put me in charge of the naming! The shapes reminded me of arrowheads and summer-camp [at least what my lack of experience understands summer-camp to mean not having gone myself]. This is a fun refresh 'cause as Nealay designed with paracord for a fun and sporty look, you can not only embellish the triangular elements with any bead 10mm and above, but string the Slides onto thick cording, rubber, leather, fiber/hemp or (for a super-fun and summery vibe) a silk neck-scarf, separating the elements with coordinating beads or knots into a totally-you design!]



18 Mar 2021
Link:#GitcheGoomieSlides

Materials

- Aluminum Wire, 12 gauge
 - Copper [SKU 74720001-02]
 - Green Apple [SKU 74720001-05]
- Aluminum Wire, 18 gauge
 - Lt. Copper [SKU 74720002-03]
 - Green Apple [SKU 74720002-05]
- John Bead Czech pearls, 8in Strand Combo 10-16mm (13pc)
 - Cream [SKU 18088109-01s8]
 - Rose Gold [SKU 18088109-11s8]

Tools

- John Bead Pro Line Pliers/Cutter Set [SKU 74527341]
 - Round nose [SKU 74527301]
 - Chain nose [SKU 74527300]
 - Side-cutter [SKU 74527320]
- Nylon Jaw Pliers [SKU 74527322]
- Metal Complex Hammer, nylon [SKU 74529456]
- Metal Complex Bench-block, 4" [SKU 74529401]
- GitcheGumee Slides pattern [Hand Tool version @ Bead Projects & PDF's from John Bead Facebook group] or [Jig version @ www.BrendaSchweder.Etsy.com]



B R E N D A S C H W E D E R
J E W E L R Y

GitcheGoomie Slides (#11-2021)

John Bead
ESTABLISHED 1954

#githegoomieslidesjohnbead #githegoomieslidesntaj

Directions

Create the GitcheGoomie Slides

1. Cut a length of 8" [small], 9" [medium], or 10" [large] 12-gauge wire in either Copper or Green Apple.
2. Referencing the GitcheGoomie Slides pattern, form the wire to match the Slides Setup.
3. Trim at the cut marks with a cutter and deburr the ends with a wire rounder or needle file. [Note: You'll need to open the loops to file the ends.]
4. Lightly hammer the whole to flatten and harden with a nylon hammer and bench-block.
5. Turn the orientation of the upper bail-loop 90 degrees, so that it is perpendicular to itself.
6. Repeat to form as many links in as many sizes as preferred.

Embellish the GitcheGoomie Slides

1. Cut a 4" length of 18-gauge wire to match or contrast the Slide.
2. Trim and deburr one end with a wire rounder or needle file.
3. Form a figure-eight with the very tip of a round nose pliers and bend the wire to a 45-degree angle to the figure-eight with a chain nose pliers. [Note: This will form a fancy head pin.]
4. Load the preferred size pearl onto the head pin, and seat the pearl atop the bottom seat-loop inside the triangle. [Note: The side the pearl is on will be the front.]
5. Keeping tension to the wire so the pearl stays in place, wrap the tail over the neck of the bail-loop twice.
6. Neatly trim the tail to 1 inch with a cutter and deburr.
7. Form a spiral or coil with the remainder of the tail and tuck it neatly inside the back of the seat-loop.



f LIVE

YouTube

Link: #GitcheGoomieSlidesJohnBead

18 Mar 21

Brenda Schweder
for John Bead Corporation

GitcheGoomie
Slides

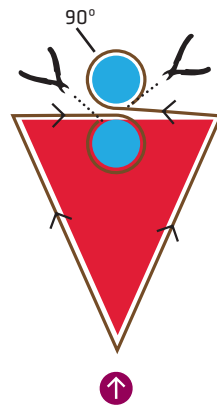
B
Blank

Ch
Charm

Measurement
Legend

- 1/32"
- 1/16"
- 1/8"
- 3/8"
- 5/8"
- 7/8"
- 3/16"
- 1/4"
- 1/2"
- 3/4"
- 1"

Slides Setups



Slides Setups
FocalWire
(8", 9", 10") length,
center wire
14-18g steel
12-16g other
BindingWire
(4") length,
20g steel
18g other

- Start Here
- Lead Length / Direction
- Wrap / Bind
- End / Cut Here
- Mirror Image
- BuildOut / BuildIn
- LollipopOnTop

Print at 100%



©2021 Now That's a Jig! by Brenda Schweder

John Bead
ESTABLISHED 1954