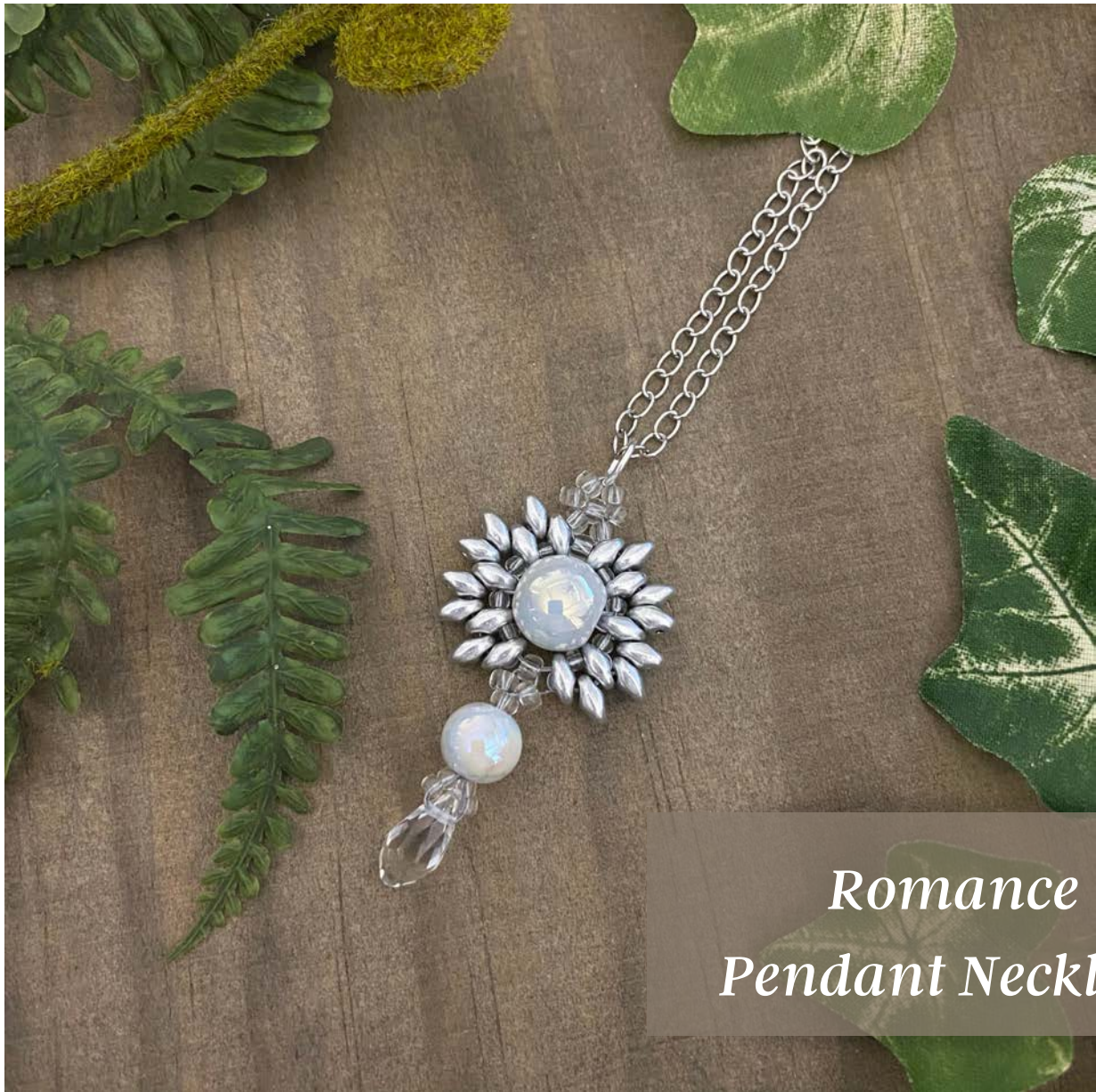


# Michael's®

Made by you™



*Romance  
Pendant Necklace*

*John Bead*  
ESTABLISHED 1954

# Materials

John Bead Czech Glass Seed Beads in Size 8/0  
Transparent Crystal SKU 10549080

John Bead Czech Glass Seed Beads in Size 10/0  
Transparent Crystal SKU 10416637

John Bead Czech Glass Two-Hole SuperDuo Beads  
Matte Metallic Silver SKU 10627247

Grey Marble Glass Round Beads by Bead Landing 10594177

Crystal Iridescent Teardrop Glass Beads SKU 10264464

Wildfire Beading Thread .006 Frost SKU 10104818

6mm Jump Ring SKU 10376096

Size #12 Hard Beading Needle SKU 10348545

Precision Scissors SKU 10591717

Beading Mat SKU 10348546

Skill Level - Beginner

Time to Complete - 1 Hour

This elegant pendant was inspired by Regency Era jewelry and the timelessness of pearls. A sterling setting for a 10mm pearl is created with matte silver John Bead Czech Super Duo beads paired with transparent crystal seed beads atop an 8mm Pearl and Faceted Drop.

Size 8/0 Seed Bead	S8
Size 10/0 Seed Bead	S10
Superduo Bead	Duo
8mm Pearl	Pearl8
10mm Pearl	Pearl10
Faceted Teardrop	Drop

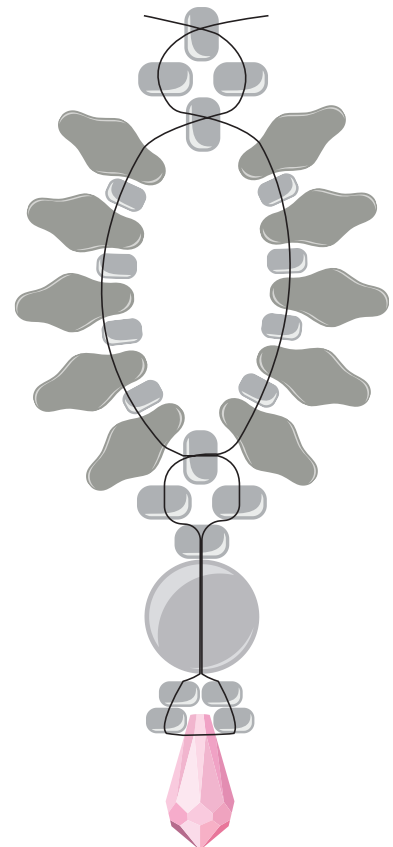
### Step 1

Frost Color Wildfire Thread in .006 was used to construct this stitched pendant. A length of 45 inches [114 cm] should give you plenty of length to complete the design without adding thread.

Flatten each end of the Wildfire thread with chain nose pliers to help with threading a size #12, hard beading needle onto each end, folding over at 7 to 10" [25.4 cm] to create a comfortable working length with each side.

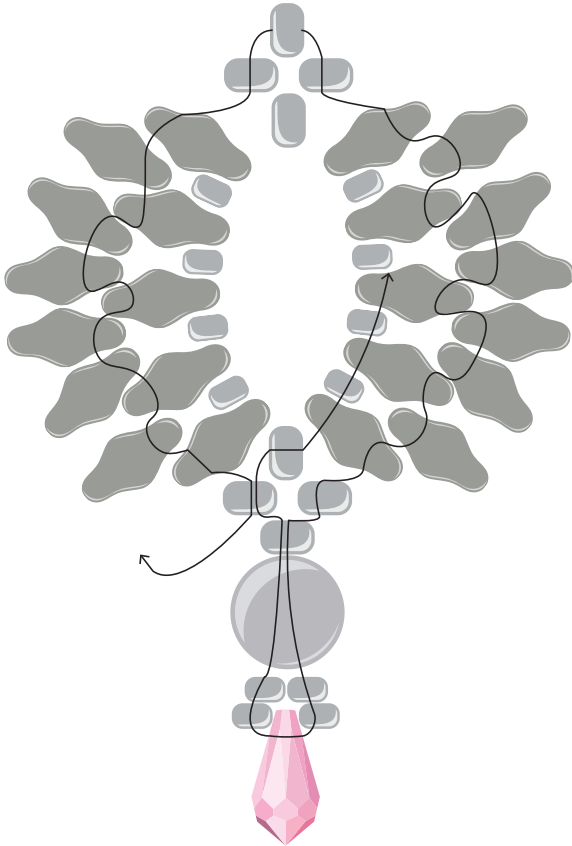
Bring the Faceted Drop bead (drop) to the center of the thread. Pick up two S10 beads on each strand. Bring the strands through an 8mm Pearl (Pearl8) and a size 8/0 seed beads (S8). Separate the strands and string an S8 bead onto each. Bring the strands through another S8 in opposite directions.

With each strand, string [Duo, S10] four times then add one more Duo. Bring each strand through an S8 in opposite directions. Pick up an S8 on each strand and again bring them through another S8 in opposite directions.



## Step 2

Bring each strand down through the next S8, then through the top hole of the first Duo. Pick up (1) Duo and go through the top hole of the next Duo. [Pick up (2) Duo and go through the top hole of the next Duo] twice. Pick up (1) Duo and go through the top hole of the last Duo.

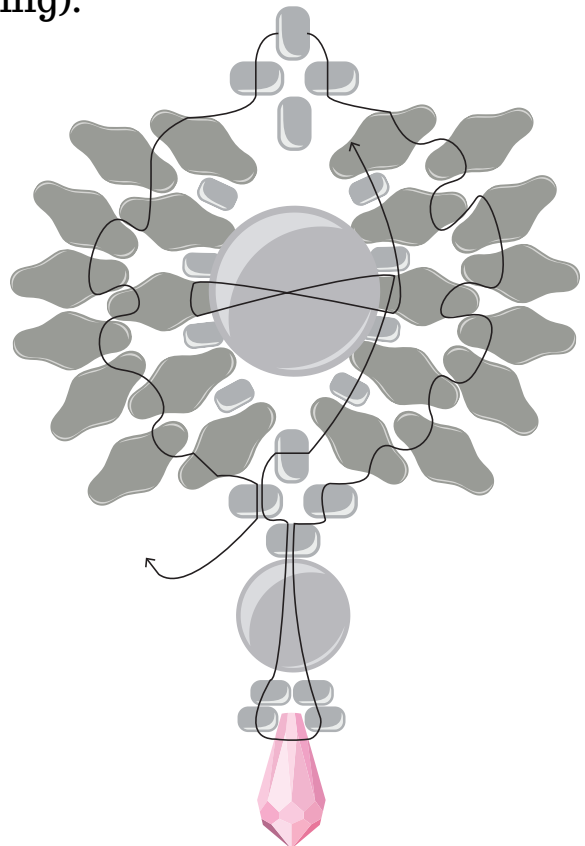


Bring each strand down through the next S8 bead below.

## Step 4

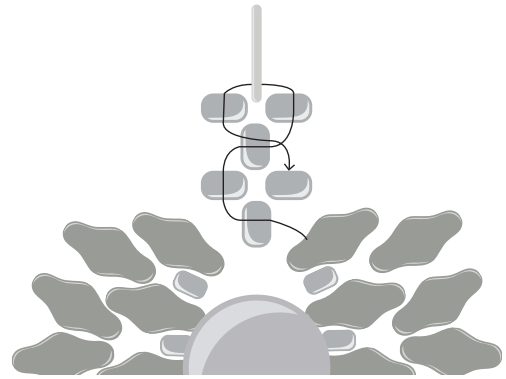
With whichever strand is longest, go through the next S8 and the Pearl8. Loop through the S10 and Drop, come back up through the next S10 and continue through the Pearl 8 and the S8 above. Go through the opposite S8 above (this is the one your other strand is exiting).

Go through the next S8 and through the Duo and S10 twice, then go through the next Duo. Your thread should be exiting the middle Duo. String a 10mm Pearl (Pearl10). Go through the Duo on the other side, entering from the bottom up, then go back through the Pearl10 and up through the center Duo. Continue through the S10 and Duo above.

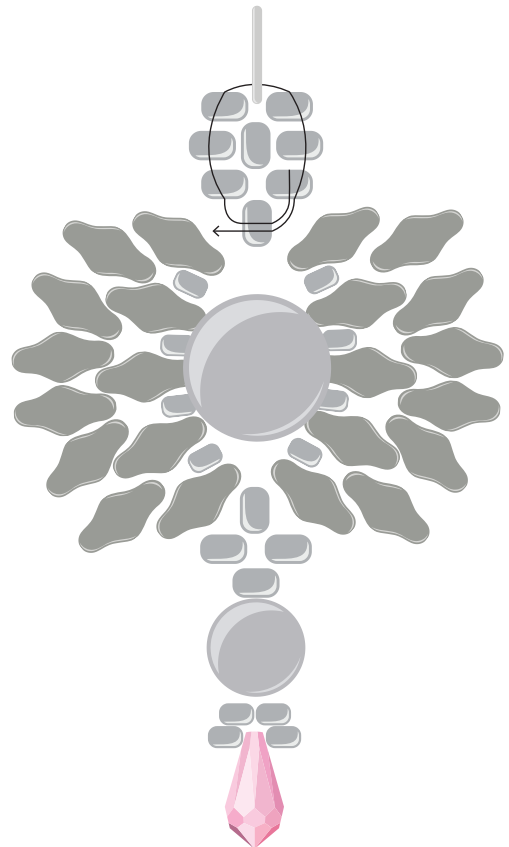


### Step 5

Go through the next (3) S8, following the right angle weave stitch convention. Pick up an S8, a jump ring, and an S8. Go through the next S8.



Continue through the next (3) S8. Pick up a new S8 and go through the S8 above. Go through the jump ring and the next S8. Pick up a new S8. Go through the S8 below and the next S8.



### Step 6

Weave in the remaining thread. To do this, go through several beads and then use the Duo beads to change direction a couple of times. Trim remaining thread.

### Step 7

String the chain of your choosing through the jump ring.

Share your designs with  
#JohnBead and  
#MakeItWithMichaels