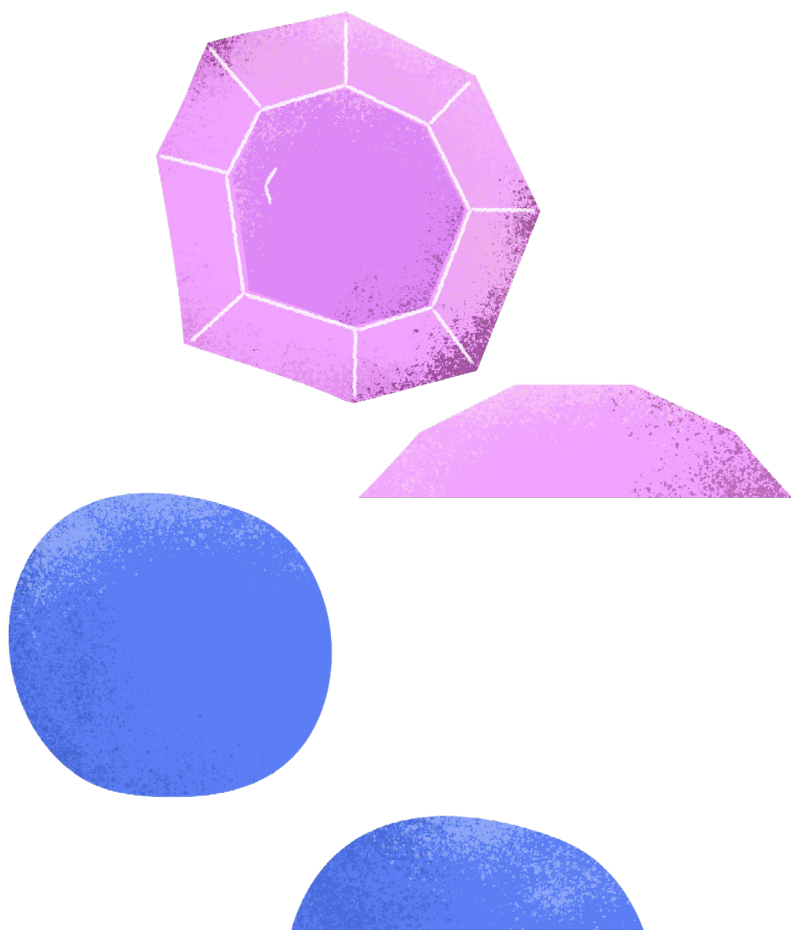


John Deed
ESTABLISHED 1954

How to *Bling* Anything

**Application Manual for
Glue-On Rhinestones
Flatbacks**



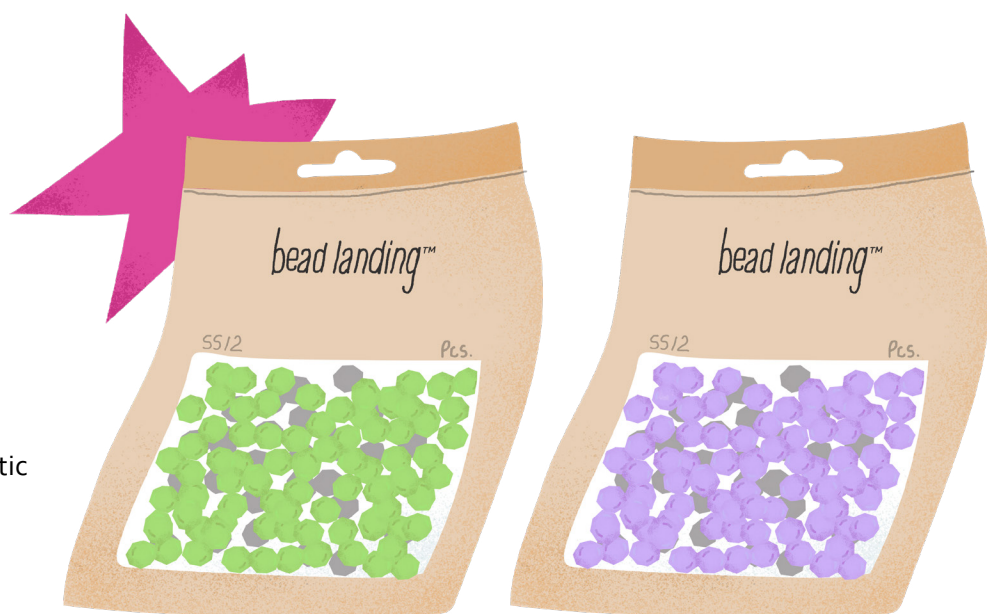


Michaels Bead Landing Glass Flatback Rhinestones

Rhinestone flat backs have more than one name. They are often referred to as stones, crystal embellishments or bling. What separates them from other embellishments is their “flat” backside, making them ideal to glue to many surfaces.

Types of Flatbacks

The new Bead Landing collection are glass flatback rhinestones. This is important, because the glass works well with the vast majority of glues and epoxies available. There are other flatbacks in the store too including plastic and high end designer crystals.





Glue

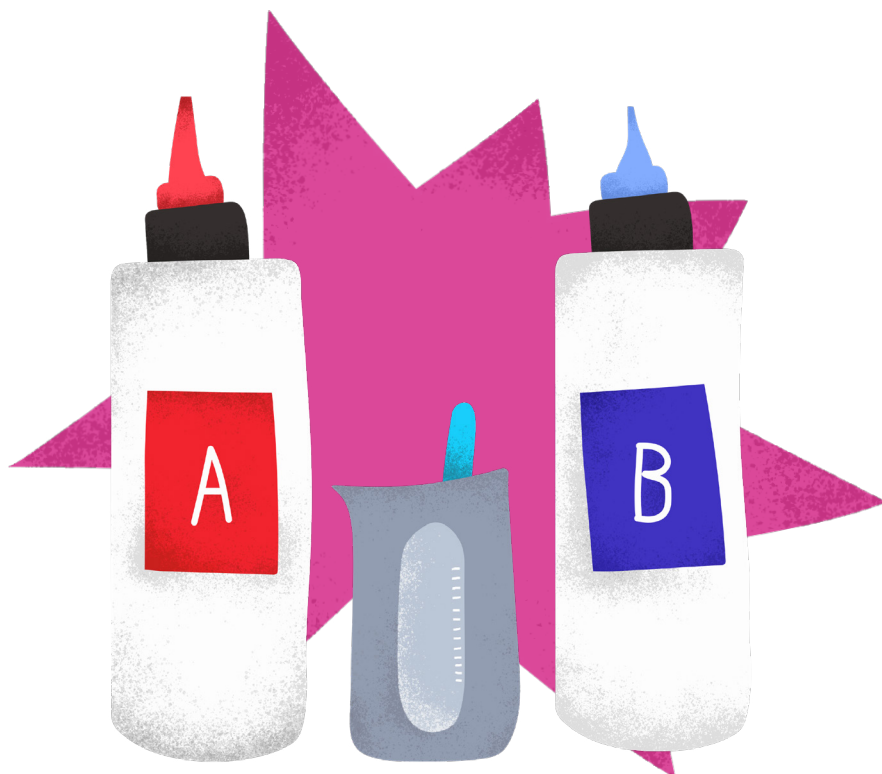
How you glue, and the type of glue used is what will make your blinged projects stay blinged.

Flatbacks can be glued to virtually any surface, as long as the right glue is used. There are specialty glues for fabric, paper, wood & metal. And there are some multi use glues for more than one surface option. The important thing is that the glue needs to dry/cure clear, so glue is not visible around your flatbacks.

There are many glues at Michaels you can work with. A few are already favorites for rhinestone blinging enthusiasts. We will use different glues for different projects in our classes and you will see more than one referenced in our project sheets.

Epoxy Glue

Some designers also choose to use resins and epoxies for their projects. Two part and UV resin glues are used to apply flatbacks to some surfaces, particularly objects and even cars that will be kept or used outdoors. We will not cover brands or recommendations for epoxy in this manual and urge you to review those options online while carefully reading about safety techniques when working with epoxy glue products.

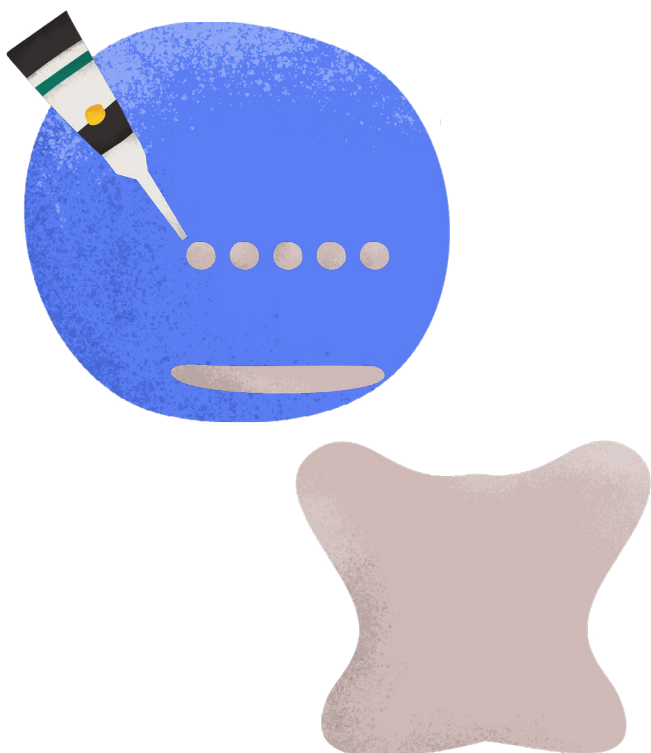
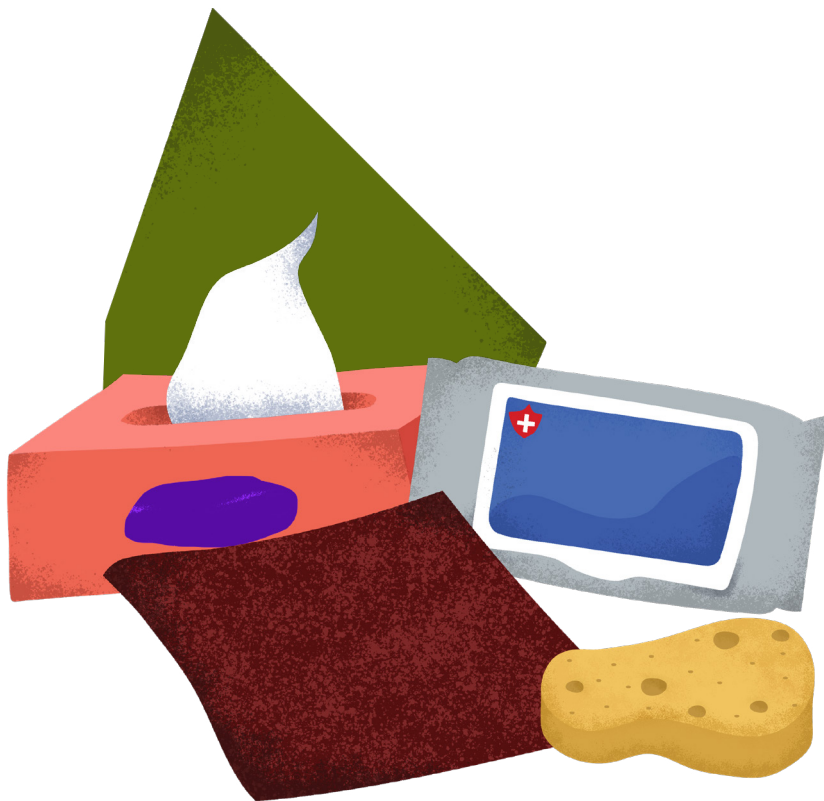


Alcohol Wipes & Sanding Paper

You will want to make sure the object you are gluing on is clean and ready to accept glue. Grease from production or handling needs to be removed or the glue will pop off your finished piece later. Clean any rust, paint varnish or dirt from your surfaces. Fabric should be pre-washed.

When applying flatbacks to metal or other slick surfaces, pre-sanding and then washing the object is really helpful to ensure that the glue adheres. For sanding, you can use a small piece of sandpaper (80-150 grit), one of the newer sanding pads or even a soft nail file.

You will see many crafters use a single use alcohol swab to ensure all sanded dust is removed. These alcohol wipes are easy to purchase by the box in your local pharmacy or online. Please consider wearing a mask when sanding any surface.

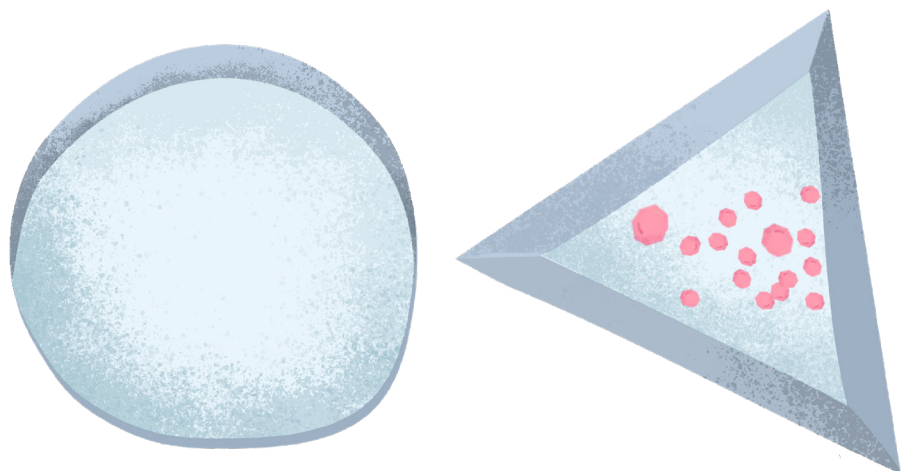


Glue Application

Depending on the pattern and your own personal style, there are several ways to apply glue and then your rhinestone flatback. The glue you choose will dictate the options, because a fast drying glue will harden if you put too much on your surface and you do not apply the crystals fast enough.

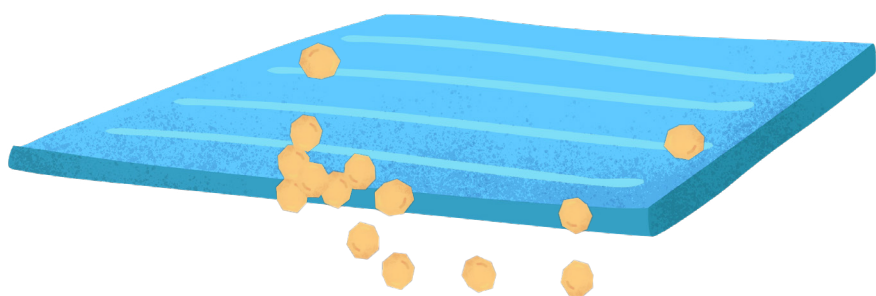
You will see most blingers do one of three things. They may place a dot of glue exactly where they need to place a crystal, several dots at a time. They may extrude a line of glue 1-2 inches long and then apply all the flatbacks. Finally, they may cover a whole surface/zone and just place flatbacks randomly and quickly.

It is important that the glue is not applied too thickly, or it will seep around all the edges of the flatback, and onto the flatback glass. Even though it will dry clear, you may not like the look of the excess glue on the surface.



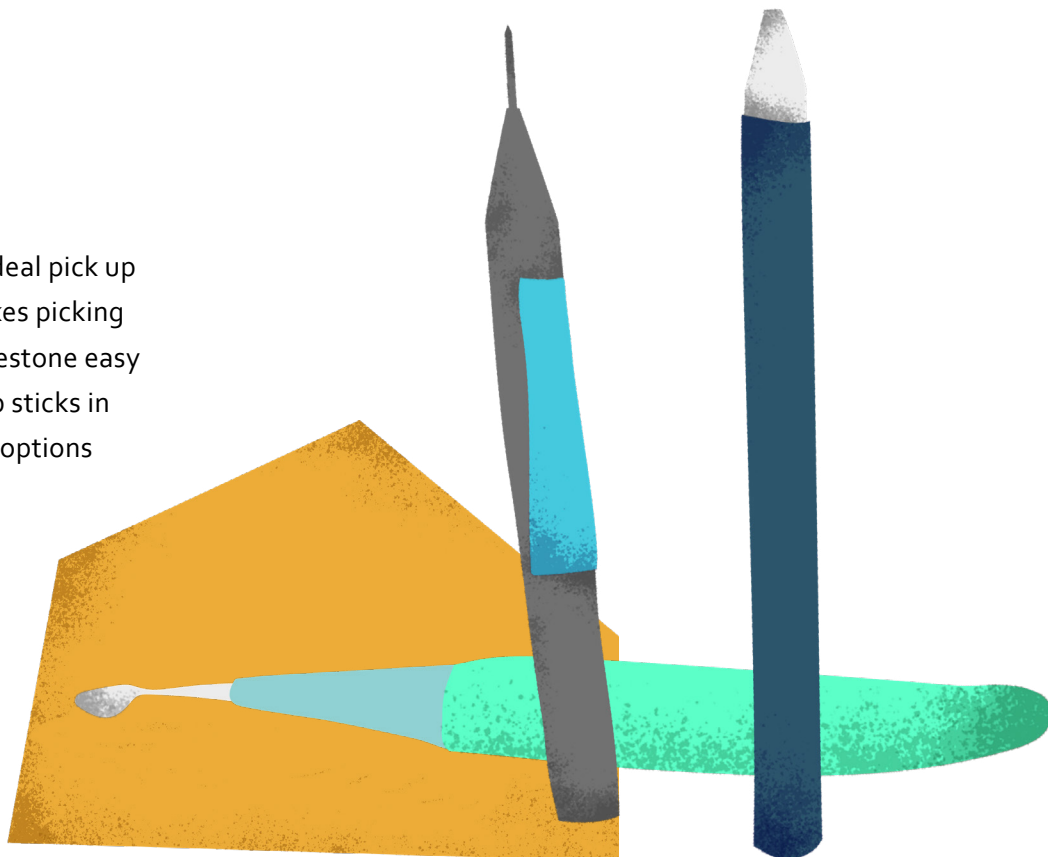
Pick Up Trays

A pick up tray helps you to quickly flip your crystals so the flatside is facing down. They also speed up cleaning your work area when a project is complete. Crafters have come up with many different ways to keep their flatbacks sorted. More than likely you will have a favorite that you will stick to.



Pick Up Sticks

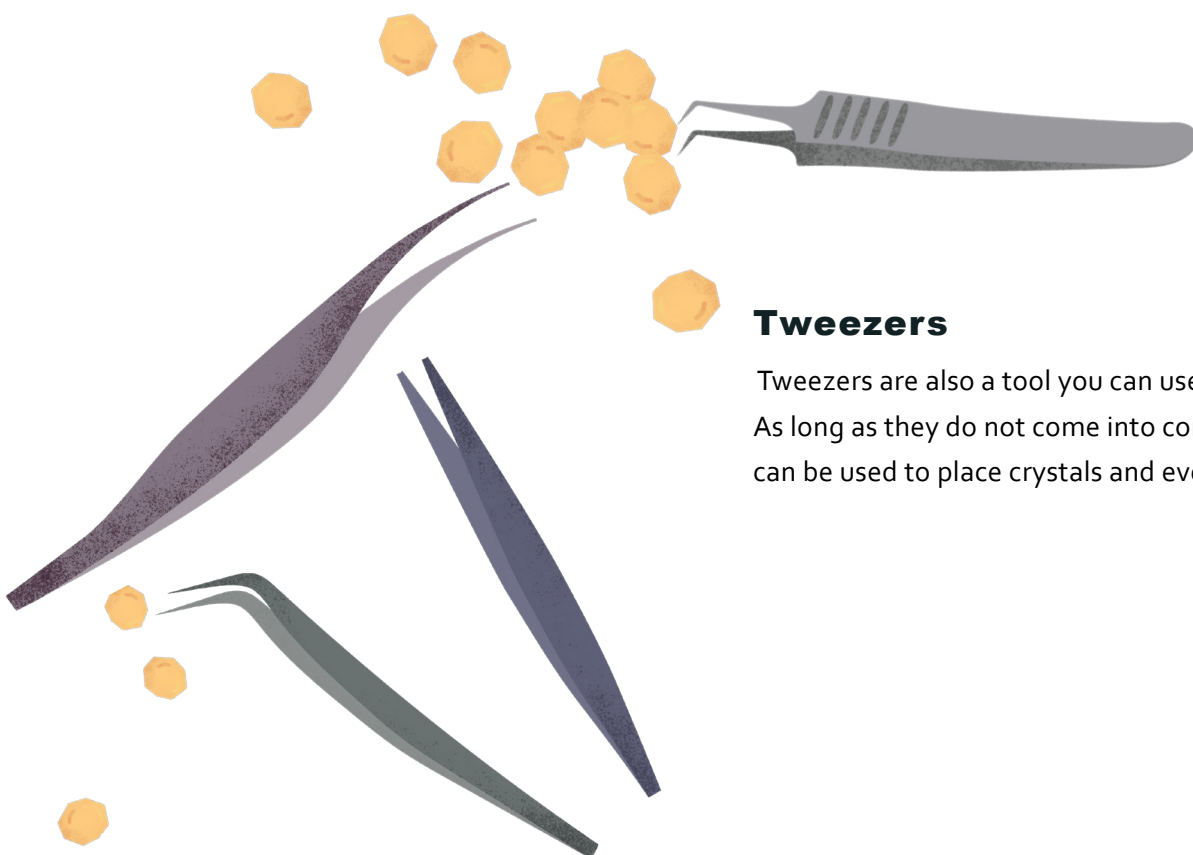
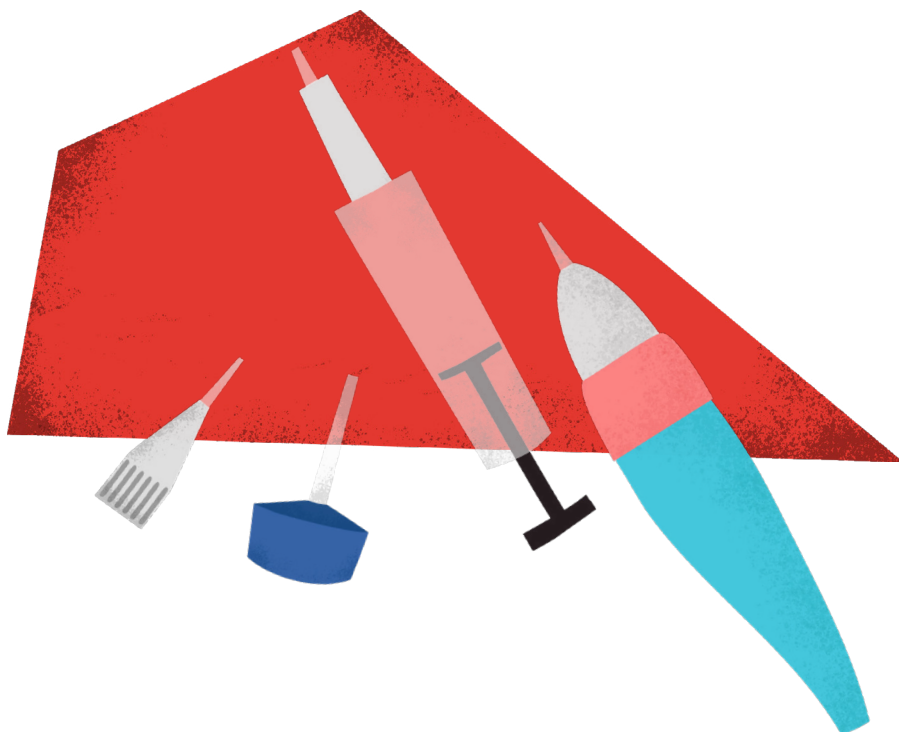
There are many options. The ideal pick up stick has a wax tip, which makes picking up and placing a flatback rhinestone easy and fast. Michaels has pick up sticks in a few departments and many options online.



Glue Syringe Tips

The glue you use may not have the best tip for the best application technique. You will want to apply thin lines and small dots, and a big, large tip does not make that an option. Many crafters are purchasing glue applicator syringes. You can purchase them with different gauge tips. The tips can be plastic or metal, and they are a fantastic way to just place glue exactly where you need it.

Water based glues are best if you have a metal based tip. Otherwise, your tip will be a one time use applicator as most glues will harden permanently in the tip.



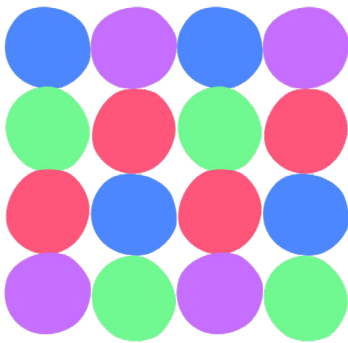
Tweezers

Tweezers are also a tool you can use to pick up flatbacks. As long as they do not come into contact with glue, they can be used to place crystals and even move them.

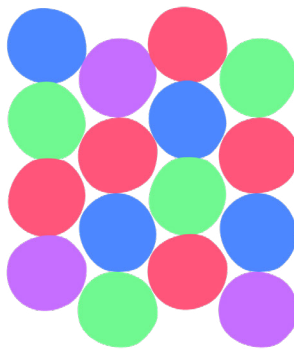
Flatback Fill Patterns

There are so many patterns you can use if you want to cover a large surface with flatbacks. In the blinging world, there are several that are referred to the most often. The Crystal Ninja, Kellie Defries is to be recognized for sharing these pattern concepts. As a ceramicist, she studied mosaic techniques and applied these concepts to crystallizing. Her video "What is your favorite fill pattern and why" should be on your must watch list.

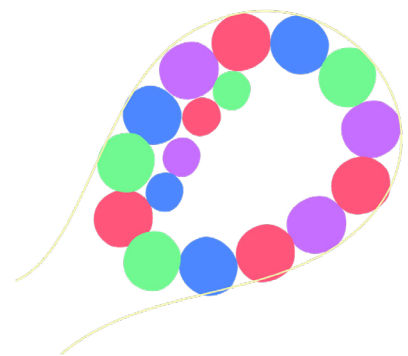
<https://youtu.be/-zycgZnZ-Ag>



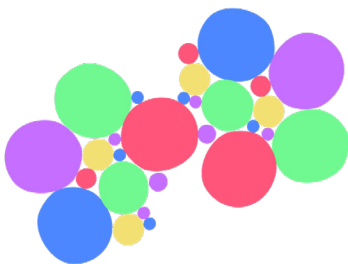
**Straight Grid
Linear**



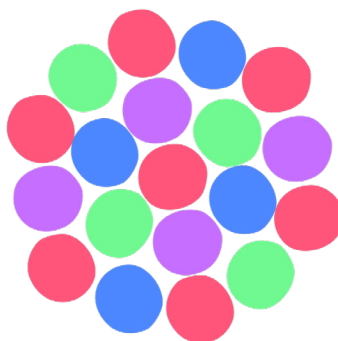
Honeycomb



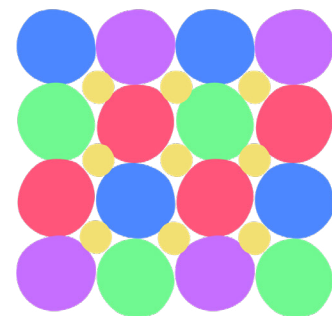
**Contour
Outline & Filling**



Scattered Sprinkle



Concentric Circle



Precision

Storage

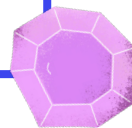
If you follow any designer or blingers on social media, you will see every type of storage being used for flat back crystals. Ideally, you store your crystals by size and color. There are jars, boxes with dividers, trays and more being used. It is always best to store them so that if you have to set a project aside (or if you have a cat) you won't have a major spill mixing your crystals. The package that Michael's crystals are in are also resealable, so keeping them in the bag is simple too.

If you pour all your crystals into a box bin, keep a small spoon handy to scoop out only what you may need when working on a project. To return crystals to storage, a scoop or spoon works great if they are smaller than the opening of the bin you are using.

If you can, have one storage container or bag for odds and ends. A place to put single leftovers or spills because you will find for certain projects, a mixed container of sizes and colors can be fun to work with.

TIP: If you think you do not have space or the desire for too many containers for your flat back collection, consider storing all sizes in one color together.

Another tip we would also give is to be careful not to return a flatback with glue on the back to your container. It will stick to several flatbacks and may not be useable for your next project.



Bead Landing rhinestone flat backs

The crystal strands in the stores have inspired a brand-new collection of flat back rhinestones to add shimmer and color to jewelry, water bottles, clothing, footwear, home décor and paper crafts.

This collection includes all the most popular colors found in other flat back brands and has everything you need to create a rainbow in bling.

- Crystal is available in five SS sizes.
- Crystal AB is available in four SS sizes.
- A rainbow can be made as the collection includes Red, Orange, Yellow, Green, Blue and Purple.
- These bags are generous in piece count and well-priced for projects needing many rhinestones.

Crystal



Crystal AB



Bead Landing™ Rhinestone Flat Backs

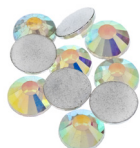
The crystal strands in the stores have inspired a brand new collection of flat back rhinestones to add shimmer and color to jewelry, water bottles, clothing, footwear, home décor and paper crafts. This collection includes all the most popular colors found in other flat back brands and has everything you need to create a rainbow in bling. Crystal is available in five SS sizes. Crystal AB is available in four SS sizes. These bags are generous in piece count and well-priced for projects needing many rhinestones.

Crystal



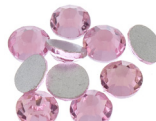
- SS 12
- SS 16
- SS 20
- SS 30
- SS 34

Crystal AB



- SS 12
- SS 16
- SS 20
- SS 30

Light Pink



- SS 12
- SS 16
- SS 20

Light Siam



- SS 12
- SS 16
- SS 20

Peridot



- SS 12
- SS 16
- SS 20

Orange



- Mixed Bag includes SS 12, SS 16, SS 20

Yellow



- Mixed Bag includes SS 12, SS 16, SS 20

Emerald



- SS 12
- SS 16
- SS 20

Aquamarine



- SS 12
- SS 16
- SS 20

Blue Zircon



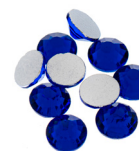
- Mixed Bag includes SS 12, SS 16, SS 20

Light Sapphire



- SS 12
- SS 16
- SS 20

Sapphire



- SS 12
- SS 16
- SS 20

Light Violet



- SS 12
- SS 16
- SS 20

Jet



- SS 12
- SS 16
- SS 20

Metallic Gold



- SS 12
- SS 16
- SS 20

Metallic Silver



- SS 12
- SS 16
- SS 20