

Design by Helena Chmelíková

PRECIOSA Rocailles

331 19 001; 6/o; 10/o



PRECIOSA Tubes

321 11 001; 40 x 3 mm



Preciosa Ornela introduces beads and seed beads from the PRECIOSA Traditional Czech Beads™ brand.

Preciosa-Ornela.com

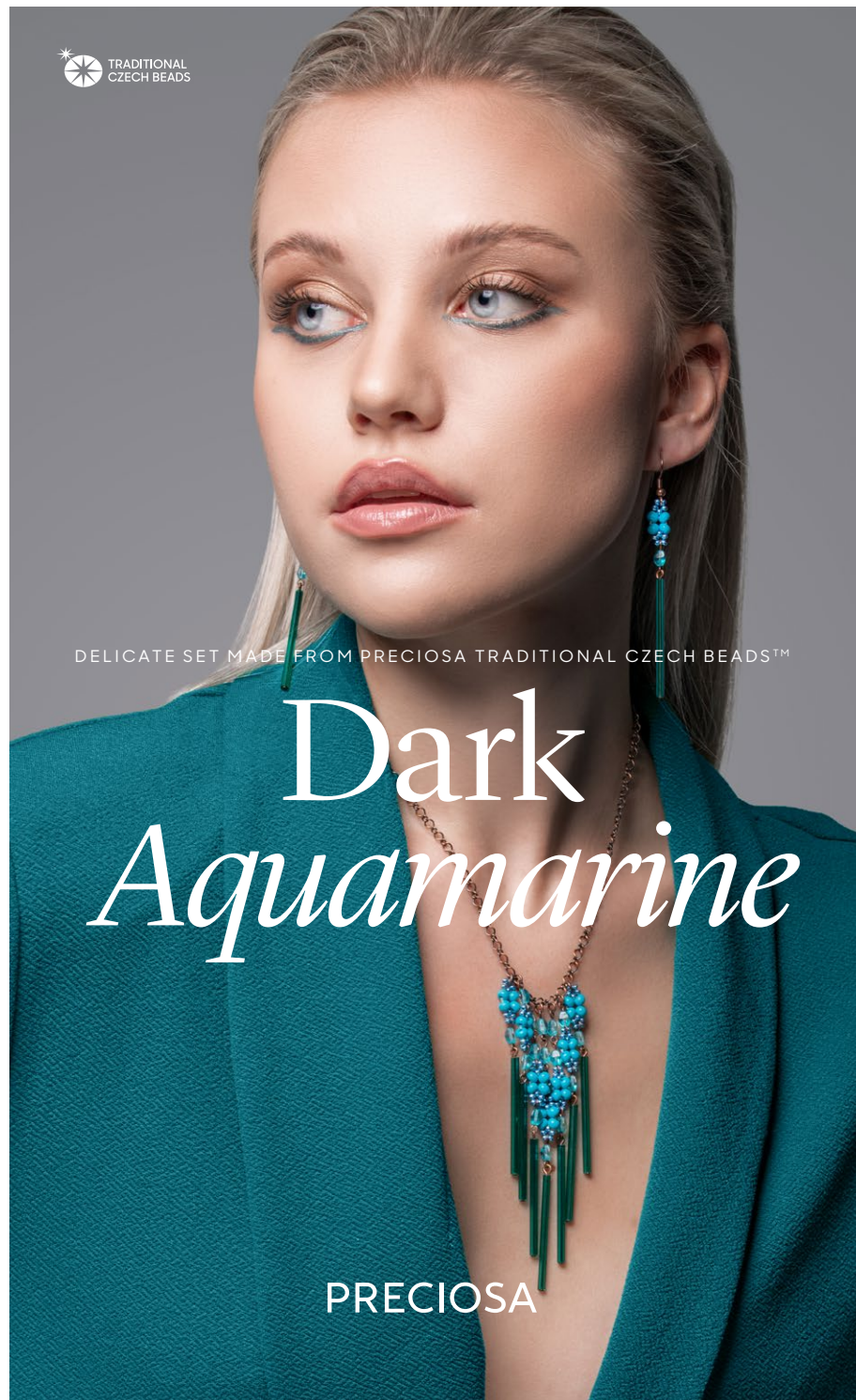


TRADITIONAL
CZECH BEADS

DELICATE SET MADE FROM PRECIOSA TRADITIONAL CZECH BEADS™

Dark Aquamarine

PRECIOSA



Dark Aquamarine

Be enchanted by the color of 2026. Dark Aquamarine combines the depth of the ocean, elegance and modern energy. Create a piece of jewelry that will brighten up any outfit and bring you a feeling of exceptionality — with an effect that is unmissable.
You will need PRECIOSA Rocailles, long PRECIOSA Tubes and pressed beads.

Materials and tools:

PRECIOSA Rocailles (R6)

331 19 001; 6/0;
 22m18 dark aquamarine;
 the necklace: 35x;
 the earrings: 8x



331 19 001; 10/0 (R10)
 18536 metallic turquoise;
 the necklace: 90x;
 the earrings: 30x



PRECIOSA Tubes (T)

321 11 001; 40/3 mm;
 50710 aquamarine;
 the necklace: 7x;
 the earrings: 2x



PRECIOSA Pinch pressed beads (P)

111 54 805; 5 mm;
 00030/01165 aquamarine;
 the necklace: 20x;
 the earrings: 4x



- a 50 mm eye pin – 9x; a 15 mm eye pin – 20x; a chain (10 links for hanging – 5,5 cm); earring hooks; 4 mm and 5 mm rings; a carabiner, a counter-ring



- a thin needle; a 0.20 - 0.25 mm nylon line; scissors; snipping pliers; round-nosed pliers; flat-nosed pliers; ruler



Difficulty: ● ● ● ● ●

Technique: simple sewing, linking

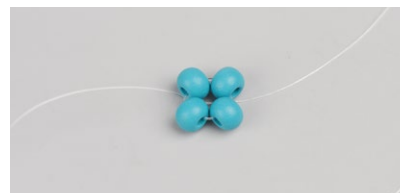
Procedure:

The sewn part

Step 1
 If you want to sew all the parts using one line, cut off 1.5 m. When sewing 1 part, prepare 40 cm. String the line into the eye of the needle. You will need 7 parts for the necklace.



Step 2
 String 4x R6 and thread the line through them one more time. Tie off the line with two knots.



Step 3
 Thread the line through 1x R6 next to the knot. String 5x R10. Move them up to the R6. Thread the line through them one more time. Thread the line through the R10. thread it through the 1st R10 again. Adjust the loop of R10. Thread the line through 2x adjacent R6.



Step 4
 String 5x R10. Move them up to the R6. Pass the line through the R10 one more time. Thread the line through the 1st R10 again. Adjust the loop of R10. Thread the line through 1x adjacent R6. Tie off the end of line with two knots. Thread the ends into the R6, R10 and R6, each one in the opposite direction. Cut them off.



linking

The longest central pendant

Step 5
 Pass the pin through the T. 8 – 10 mm of free wire should protrude from it. Grasp the end of the wire between the ends of the points of the round-nosed pliers. Twist the wire around the points of the pliers. Bend the wire to the edge of the hole before closing. String the eye of the eye pin onto the wire. Close the eye using the points of the round-nosed pliers. You can also use flat pliers for this.



Step 6
 String 1x P onto an eye pin. Create an eye. If the wire is longer, snip it back to a length of 8 – 10 mm. Insert the semi-closed eye between the R10 of the sewn part. Close the eye.



Step 7
Slightly open the eye on the newly linked eye pin. Insert it between the **R10** from the second side of the sewn part. Close the eye. String 1x **P** onto the wire. Create an eye. String the eye of a new eye pin before totally closing the wire.



Step 8
String 1x **P** onto an eye pin. Create an eye. String the eye of a new eye pin before fully closing the wire.



Step 9
String 1x **P** onto an eye pin. Create an eye. Twist the eye horizontally with the base.



Step 10
The two pendants next to the central one. Repeat Steps 5 - 8. Close the eye and twist it horizontal with the base.



Step 11
The next 2 pendants from the centra one. Repeat Steps 5 - 7. Close the eye and twist it horizontal with the base.



Step 12
The two outer pendants. Repeat Steps 5 and 6.



Step 13

Assembly

Cut off 50 cm of chain. Find the central link. Hang the central pendant in it using a 4 mm ring. Hang the second longest pendants on the second links from the centre. Hang the third longest pendants on the third links from the centre of the chain. hang the outer pendants on the fourth links from the centre of the chain using 5 mm rings. Adjust the length of the chain as you wish. In the example, it is 20 cm from the centre of the chain. Attach the counter-ring to one end of the chain using a 4 mm ring. Attach the carabiner to the other outer link.



The earrings

Sew two parts. Create two outer pendants according to Steps 5 and 6. Slightly open the eye on the earring hook. Insert it between the **R10** on the sewn part. Close the eye.

